

# Manual on how to dispose of

# household waste

**Mobile batteries must not be disposed of at collection stations, but should be placed in collection boxes for batteries!**  
(in order to prevent fires)



Please use the Garbage Sorting App! /

Saitama City Garbage Sorting App



iOS version



Android version

- \* English, Chinese, Korean, Vietnamese, and Portuguese are also supported.
- \* A browser version of the Garbage Sorting Dictionary is also available.



Saitama City Environmental mascot,  
**Sai-chan**

Named after the word "sai" in Saitama City and "sai" from the word sai-riyou (re-use)

## Fiscal Year 2023

### Year-end and New Year holidays garbage collection


Kind	Collection day	Last day	Start date
Burnable Waste	Monday, Thursday	12/28 (Thursday)	1/4 (Thursday)
	Tuesday, Friday	12/29 (Friday)	1/5 (Friday)
	Wednesday, Saturday	12/30 (Saturday)	1/6 (Saturday)

**No collection will be done from January 1 up to January 3.**  
Otherwise, the collection will be done as usual.

Kind	Collection day	Last day	Start date
Unburnable Waste	—	Collection day for each district until <b>12/29</b> (Friday)	Collection day for each district from <b>1/4</b> (Thursday)
Harmful and Dangerous Waste			
Recyclable Resources Type 1, 2			

Please see the "Collection Day List" on pages 18 and 19.

## Garbage Collection Day Entry field

<b>Recyclable Resources Type-1</b>	Transparent or semi-transparent bag for each type	Every <input type="text"/> (day of the week)
<b>Recyclable Resources Type-2</b>	Tie each type with a string, etc. 	
<b>Harmful and Dangerous Waste</b>	Transparent bag for each type	Every <input type="text"/> (day of the week)
<b>Unburnable Waste</b>	Transparent bag	
<b>Burnable Waste</b>	Transparent or semi-transparent bag	Every <input type="text"/> <input type="text"/> (day of the week)

● It should be put it out by **8:30 a.m.** on the day of collection, or by **5:30 a.m.** in districts that collect burnable waste early in the morning (time designated by the local community).

● **Business-related waste, including waste coming out of individual business or group activities, cannot be disposed of at collection stations for household waste.**

2	Let's make it together Meguru-machi Recycling City "Saitama"
4	Recycling of recyclable resources
6	How to dispose of garbage that can be put out at collection stations
7	Recyclable Resources Type-1
7	Recyclable Resources Type-2
7	Harmful and Dangerous Waste
8	Unburnable waste
8	Burnable waste
9	Large-sized waste Bring directly, Individual curbside collection
10	Items subject to the Home Appliance Recycling Law (TV, Air conditioners, Refrigerators, etc.)
10 11	Fire extinguishers Personal computers How to dispose of motorcycles (Items that the city cannot collect or dispose of)
12	Small household appliances
13	Information
14	Garbage Sorting Quick Reference Chart
18	Garbage Collection Day List by Districts

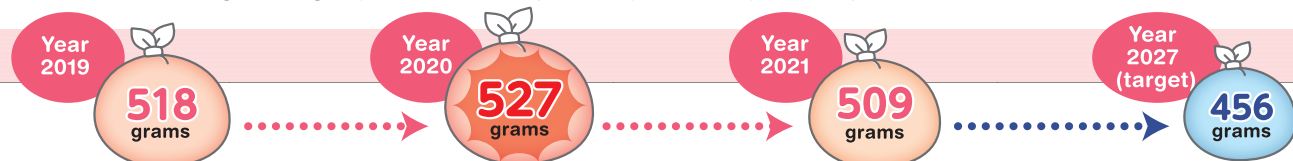
# Let's make it together

# Meguru-machi Recycling City "Saitama"

## Current amount of waste and reduction target

Saitama City generated **509 grams** of household waste per person per day in year 2021. A goal has been set to reduce this to **456 grams** by the end of 2027.

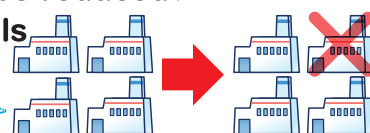
### Amount of garbage produced by one person per day (excluding recyclables)



### Why should waste be reduced?

1 Area Environmentals can be reduced

Reduce operating costs!



2 The final disposal site can be used for a long time



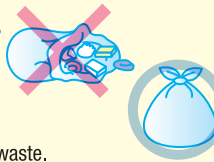
## How to dispose of waste to prevent the spread of COVID-19 infection

Be mindful of the following in order to prevent the spread of COVID-19 infection.

**How to dispose of waste**

1 When taking out the garbage, make sure to tie it up tightly!

If it is not tied up, garbage will get scattered and the virus will spread easily. Tie the bags tightly to control the spread! Put out used masks together with burnable waste.



2 Wash both hands thoroughly after taking out the garbage!

The virus may also stick to the hands after taking out the garbage. Wash both hands to wash away the virus!



## Delicious and fun Saitama City Food Loss Reduction Project

Approximately **8,700 tons** of food is thrown away from households in Saitama City annually (estimate for FY 2021). Let's acquire the skills to prevent food loss.

### ACTION 1 First of all, let's learn the basics of buying, and organizing techniques!

**Shopping**

Point 1 Don't buy in bulk

Point 2 Choose from main

Point 3 From the front of the shelf

It's important to "start with the small things and keep working on it"



### "Inside the refrigerator"

#### Point

- 1 Make proper use of the front and back area
- 2 Decide which shelf holds which food items
- 3 Use the "vegetable room" efficiently

Learn from the video! Organizing the refrigerator



### ACTION 2 Use up leftover foodstuff by making soup out of them!



Leftover foodstuff make excellent ingredients for soup! Try to make soup from leftover foodstuff in a week



### Information

Pamphlets are available at the Waste Reduction and Recycling Policy Division, Public Information Corner of each district, etc.!

\* It can also be downloaded from the city's website. Soup from leftover foodstuff made by everyone are also posted on Instagram.



Pamphlets



Instagram



Recipe video

### ACTION 3 It's such a waste, but I just can't eat all of it! Join the Food Drive!



Bring in food



Provide (free of charge)



Food Bank

Donate



Welfare facilities, etc.

For information on collection counters and target food items

(<https://www.city.saitama.jp/001/006/012/004/p071949.html>)

Use the Food Drive for collecting surplus food items, as well as to donate to welfare facilities, etc.



Make garbage disposal smarter

## Saitama City Garbage Sorting App



### ★ Point 1 ★

#### Garbage Sorting Dictionary

Searching by item makes it so easy to find information!

### ★ Point 2 ★

#### Collection Day Calendar

No need to worry about when or what kind of garbage to take out!

### ★ Point 3 ★

#### Alert function

Forgetting to take out garbage is eliminated!

### ★ Point 4 ★

#### How to dispose of waste

It's easy to know how to take care of each type!

### ★ Point 5 ★

#### Multilingual support

English, Chinese, Korean, Portuguese, and Vietnamese are supported!

### How to download:

It can be downloaded either way!

- Read the two-dimensional code on the right to download
- On the "App Store" or "Google Play", download the app by searching for "Saitama City Garbage Sorting App".



iOS version



Android version

Available for free!

### Due to wrong sorting of garbage

## Fire breaks out from spray cans, lithium-ion batteries, etc.!

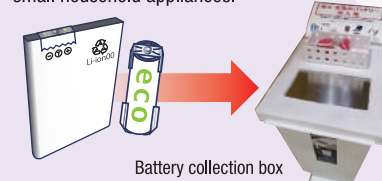


Fires can occur in collection vehicles and crushing facilities. If a crushing facility were damaged, not only would the processing stop, it would also cost a lot to restore the facility.

### Proper way to put out "batteries"

Remove rechargeable batteries such as lithium-ion batteries, etc., built into small household appliances, insulate them with tape, and place them in the "battery collection box" (see page 12).

\* Removed household appliances should be placed in the collection box for small household appliances.



Battery collection box

If unable to remove, place it in the "collection box for small household appliances" (see page 12)!

\* Removed household appliances should be placed in the collection box for small household appliances.

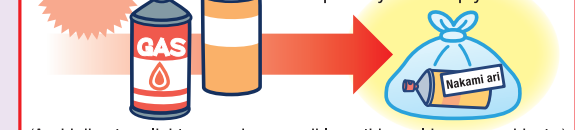


Collection box for small household appliances

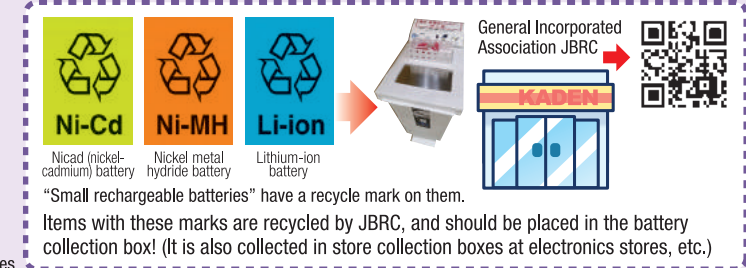
### Proper way to dispose of "spray cans"

#### Proper way of disposing

On disposal day for Harmful and Dangerous Waste (see page 7), write "Nakami ari" (with contents) and put out separately from empty items.



(Avoid direct sunlight as much as possible as this could cause accidents.)





# Recycling of recyclable resources from households

Recycling of  
recyclable  
resources

## Recyclable Resources Type-1

(bottles, cans, PET bottles, food packaging plastic)



How to dispose  
of from home

Place each type in a separate transparent or semi-transparent garbage bag and take it out to the collection station on the day of the week determined for each district.

It will then be transported to the recycling facility.

After delivery, recyclables undergo intermediate processing as follows for each type.

### Processing at the recycling facility

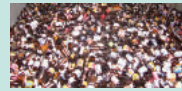
#### Bottle (cullet)



Non-recyclable items (foreign matter) are removed and sorted by color. (white, brown, other colors)



White cullet



Brown cullet




Other colors of cullet

#### Cans

Non-recyclable items (foreign matter) are removed, sorted into steel cans and aluminum cans, and then pressed (compressed).



#### PET bottle


Items with the  mark that cannot be recycled (foreign matter) are removed and baled (compressed, packed).



In some districts, they are collected in the same collection vehicle as food packaging plastics, but they are baled (compressed, packed) by type at recycling facilities, so when putting out from households, it is requested to place them in separate transparent or semi-transparent bags.

\*Lids are also recycled

#### Food packaging plastic

Items with the  mark that cannot be recycled (foreign matter) are removed and baled (compressed, packed).



In some districts, they are collected in the same collection vehicle as PET bottles, but they are baled (compressed, packed) by type at recycling facilities, so when putting out from households, it is requested to place them in separate transparent or semi-transparent bags.

Sale and recycling  
consignment

### Recycled products transformed at production plants

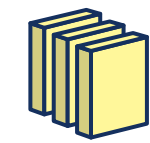
#### Items recycled from bottles (cullet)



Various bottles



Asphalt pavement



Residential insulation (glass wool)

●Why are they sorted by color?  
Sorting by color helps to transform items as recycled products more efficiently. For example, most white and brown bottles are recycled into bottles again. Other colored bottles are often transformed as other products besides bottles.

\*The above is an example of recycled products.

#### Recycled items from steel cans



Steel can



Railway rails



Reinforcing bar



H-shaped steel

#### Recycled items from Aluminum can



Aluminum can



Aluminum wheel



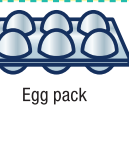
Aluminum sash



Bicycle parts

\*The above is an example of recycled products.

#### Recycled items from PET bottles



Egg pack



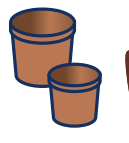
Suits



Work clothes



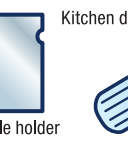
Kitchen detergent bottle



Flower pot



Eco bag



Clear file holder

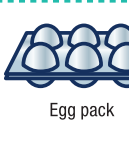


PET bottle

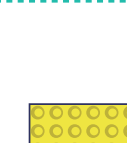
\*This city extends its support for recycling in Japan in an effort to promote appropriate recycling.

\*The above is an example of recycled products.

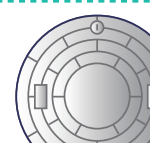
#### Items recycled from food packaging plastic



Egg pack



Braille blocks



Manhole cover

Aside from the above, it can also be recycled as chemical raw material, such as ammonia, methanol, etc., or as fuel through the process of gasification.

\*The above is an example of recycled products.

## Recyclable Resources Type-2

(used paper, fabrics)



How to dispose  
of from home

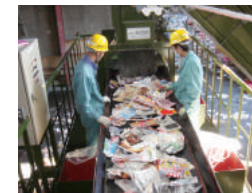
Tie each type with a string, etc., and take it out to the collection station on the day of the week determined for each district.

Collected used paper and fabrics are brought directly to a wholesaler for sale.

### Work at a used paper wholesaler

#### Used paper

Items that cannot be recycled due to dirt, etc., are removed and packed according to type (newspapers, magazines, other paper, cardboard, milk cartons).



Recycle  
(Recycling)

### Recycled products transformed at paper factories



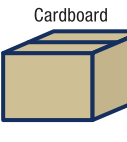
Newspaper



Magazines / picture books



Toilet paper



Cardboard

Newspapers are transformed as newspapers, magazines, etc., magazines and other paper are transformed as magazines, sweets and cake boxes, etc., cardboard are transformed as toilet paper, tissue paper, etc., milk cartons are transformed as toilet paper, tissue paper, etc.

\*The above is an example of recycled products.

### Work at a fabrics wholesaler

#### Fabrics

Items that cannot be reused or recycled due to dirt, etc. are removed and packed.

If it rains on collection day, put it out next time.



Recycle  
(Recycling)

### Recycled products transformed at a fabrics factory



Waste cloth (cleaning rag)

Used shirts and towels have good permeability, so they can be transformed and used as waste cloths or cleaning rags for wiping machine oil, etc., or as felt for automotive insulation.

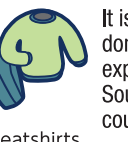
### Recycle shops, etc.



Jeans



Suits



Sweatshirts

It is recycled domestically or exported to Southeast Asian countries for reuse.

\*The above is an example of recycled products.

## Small household appliances

How to dispose

Put them out in collection boxes installed in 54 locations around the city. Items that do not fit in the box can be brought directly to each garbage disposal facility except for the Eastern Area Environmental.

\*Remove removable batteries and place them in the battery collection box.

Collected small household appliances will be handed over to a government-approved contractor for pulverization and recycling.

### Processing at recycling facilities

#### Small household appliances

Collected small household appliances are pulverized into small pieces, and valuable metals such as gold, silver, and copper are extracted.

\*Everything is grinded, and nothing is reused.



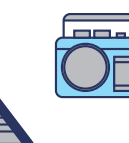
Extracted metal

Recycle  
(Recycling)

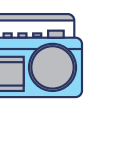
### Recycled products transformed at production plants



Laptop



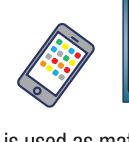
Boombox



Hair dryer



Nintendo Switch



Smartphone



Camera



Sewing machine

Extracted metal is used as material for new products.

\*The above is an example of recycled products.

Recycling of  
recyclable  
resources



# How to dispose of garbage that can be put out at collection stations

Each type of waste is collected by a separate collection vehicle, so the collection time varies, but it should be put out by **8:30 a.m.** on the day of collection, or by **5:30 a.m.** in districts that collect burnable waste early in the morning (time designated by the local community).

See pages 18 and 19 for collection days by district.

## Recyclable Resources Type-1

Every  (day of the week)

Transparent or semi-transparent bag for each type

### Bottles



#### How to dispose



Cannot be put out as bottle

Cosmetics, pharmaceutical products, oil bottles

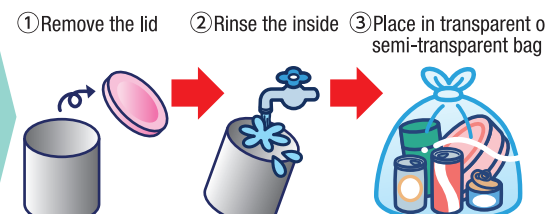
\* Dispose of as is if the label cannot be removed.

Put out with unburnable waste

### Cans



#### How to dispose



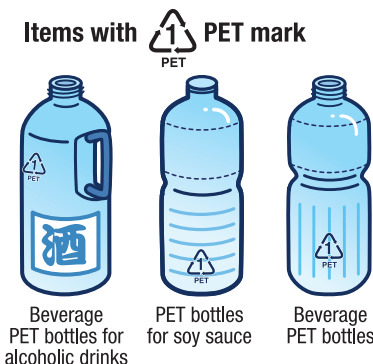
Cannot be put out as can

Spray can

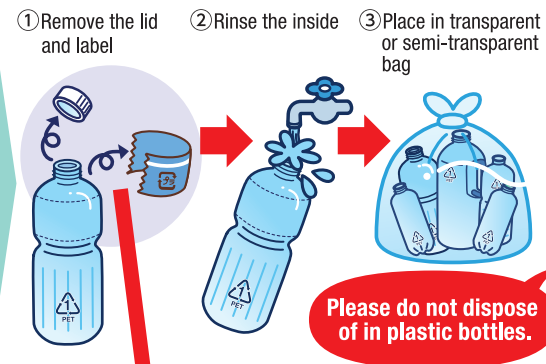
Oil bottle

Put out with Harmful and Dangerous Waste

### PET bottle



#### How to dispose



Cannot be put out as PET bottle

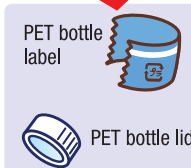
Oil container

Medical injection needle

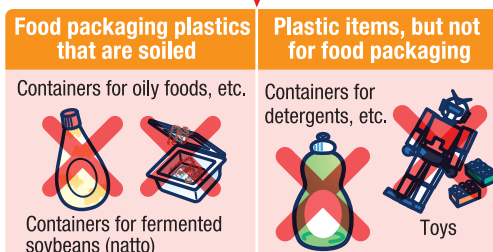
To medical institutions, etc. (see page 11)

Put out with burnable waste

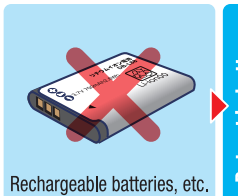
### Food packaging plastic



Items that cannot be put out as food packaging plastic



Put out with burnable waste



Put out in battery collection box, etc. (see page 12)

Recyclable Resources Type-1 Recyclable Resources Type-2 Harmful and Dangerous Waste Unburnable waste Burnable waste

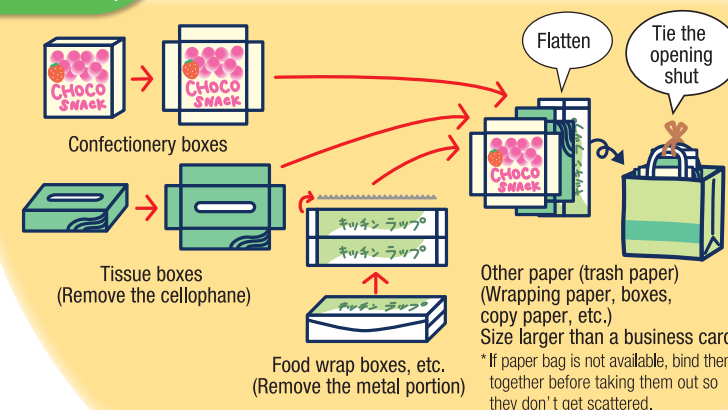
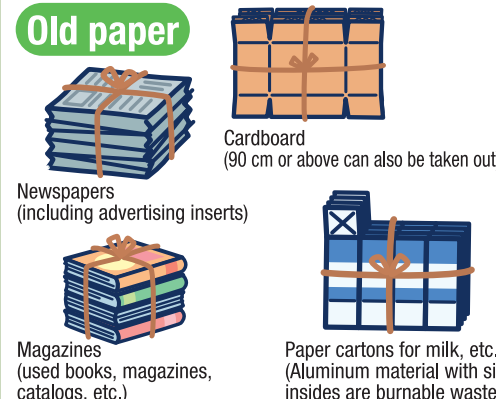
## Recyclable Resources Type-2

Every  (day of the week)

Fold each type and tie with a string, etc.

\* Due to conditions at the recycling facility, it is requested to avoid using plastic bags.

### Old paper



\* Strong-smelling items, receipts (thermal paper), shipping labels (carbon paper), crimped postcards, photographs, stickers, silver-foiled paper as well as paper cups (waterproofed paper), heavily soiled items, etc., should be put out with burnable waste.

### Fabrics

#### Examples



Old clothes, old cloth, old towels, towel blankets, blankets, curtains, suits, coats, jackets, sweaters, etc.

\* Items containing feathers, wool, cotton, gel, etc., as well as heavily soiled items should be put out with burnable waste



\* Do not remove buttons and fasteners. \* Items cannot be recycled when they are wet, so when it is raining put them out on the next collection day.

## Harmful and Dangerous Waste

Every  (day of the week)

For each type transparent bag

Frequent explosions have occurred in collection vehicles due to lighters, spray cans, etc. being mixed with unburnable waste. Make sure to put the following types of garbage in separate transparent bags and away from unburnable waste, before putting them out at the collection station.

Fluorescent tubes Batteries Spray cans / cartridge cylinders Mercury thermometers Lighters



\* If unable to use up all the contents and cannot avoid leaving some amount inside, attach a sticker that says "nakami ari" (with contents), separate from the empty ones, and keep out of direct sunlight.

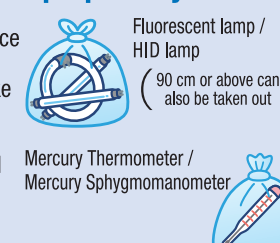
Insulate batteries by putting tape etc., on the electrodes at the ends.



### Items containing mercury

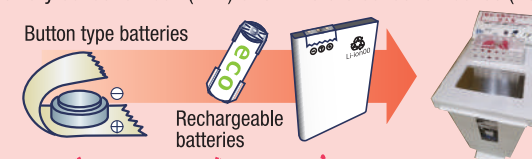
Dispose of harmful and dangerous waste containing mercury in the proper way.

Mercury is a highly toxic substance that can seriously affect human health and the environment. Make sure to dispose of mercury-containing waste that is no longer needed at home as "Harmful and Dangerous Waste" in the proper way and on the designated day.



### The following batteries cannot be put out at the collection station

Batteries (button type / rechargeable) should be placed in the battery collection box (P12) or at in-store collection boxes (P3).



Insulate batteries (button type / rechargeable) by putting tape etc., on the electrodes at the ends.



## Unburnable waste

Every

(day of the week)

Transparent bag

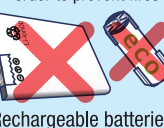
### Examples



Cannot be put out



Lithium ion battery  
\* Do not dispose of as unburnable waste in order to prevent fires.



Put out with Harmful and Dangerous Waste

Put out in battery collection box (see Page 12) or at store collection box (see Page 3)

They are also collected as small household appliances (see page 12).

- \* Collection cannot be made for 4 home appliance recycling items (TVs, air conditioners, washing machines / clothes dryers, freezers / refrigerators) and personal computers. (See pages 10, 11)
- \* Remove the kerosene from the kerosene stove. (Also remove the kerosene remaining in the main unit)
- \* Remove the contents of bottles and cans.
- \* **Make sure to remove batteries** from products that use batteries in order prevent fires.

► Household appliances within 30cm x 15cm are also collected in collection boxes. (See P12)

Frequent explosions have occurred in collection vehicles due to lighters, spray cans, lithium-ion batteries, etc., being mixed with unburnable waste.

## Burnable waste

Every

(day of the week)

Transparent bag or semi-transparent bag

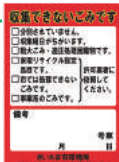
### Examples



- \* Attach a note saying "Toge Chuui" (beware of thorns) before disposing of branches with thorns, such as rose bush branches, etc., as they can injure workers.
- \* To avoid polluting rivers, food scraps and leftovers should be collected and tied up in a triangular corner fashion, and tempura oil should be soaked up in paper or solidified with a solidifying agent before putting out with burnable waste.
- \* Liquid (liquified) items cannot be put out. Disposal methods differ depending on the type, so please check the "Garbage Sorting Quick Reference Chart" on pages 14-17.
- \* Plastics other than those used for food packaging should be put out with burnable waste.

### Items that cannot be put out at collection stations

Garbage measuring 90 cm or more	Please refer to page 9 "Large-sized waste / Specially designated items that are difficult to dispose of properly".
One-time large amounts of waste due to moving places	Either take the garbage directly to a waste disposal facility or ask a waste collection company to collect it. The city will assist in introducing to a suitable company. Confirmation can also be made using the city's website. (From the top page, search for "List of authorized general waste collection and transport companies")
Items subject to the Home Appliance Recycling Law	Please refer to pages 10 and 11, "Home Appliance Recycling Items".
Waste from work and other business	Dispose of by referring to the Business Waste Disposal Guide. Garbage generated in the course of business activities such as work is to be disposed of by the business operator.



Garbage that cannot be collected will be marked with a red sticker. Please check the reason why it was checked and take the necessary action.

\* Leaving them unattended will inconvenience other collection station users, so make sure to dispose of it properly.

## How to dispose of waste that cannot be put out at collection stations

Large-sized waste Waste with a maximum side or diameter of 90 cm or more and less than 2 m in length

Specially designated items that are difficult to dispose of properly

Items that cannot be processed at city processing facilities  
Excluding "Items that cannot be collected or processed by the city" on pages 10 and 11

### Bring directly to a garbage disposal facility

Cash payment

The person disposing of items should come directly to the facility.  
\* Please bring identification documents as proof of residence in Saitama City (driver's license, insurance card, etc.).

### Processing fees for large-sized waste

Less than 100kg : Free of charge

However, if the item is 100 kg or more, the charge is 22 yen per 10 kg from the first 10 kg, and any fractions less than 10 yen are rounded down.

\* Depending on the item, some items cannot be accepted. (Refer to "Items that cannot be collected or processed by the city" on pages 10 and 11), or depending on the item, there is a limit to the number of items that can be accepted at one time. Please contact the processing facility in advance.

\* The facility may refuse to accept garbage if it is not properly sorted.

\* Fee is calculated based on the weight of items measured at the facility.

\* Garbage generated by business (including self-employed) is not considered as household waste.

\* Only burnable waste can be brought directly to the Eastern Area Environmental.

\* Only unburnable waste and large-sized waste can be brought directly to the Clean Center Osaki during weekdays.

► For the garbage disposal facility's contact information, please refer to "Notes about bringing in household waste directly" at the back cover.

Time for bringing in garbage: Monday to Friday 8:30-12:00 / 13:00-16:30  
Saturday 8:30-12:00

\* Closed from December 31 to January 3. \*Reservations are required in advance for deliveries on Saturdays, national holidays, and the year-end period.  
\* Reservations are concentrated before consecutive holidays and at the end of the year, hence it may be difficult to get through by phone, so please make reservations early.

Where to apply Waste Reception Call Center (for reservations only) TEL 050-3033-8229

Monday to Friday, 8:30-17:00 (Closed on Saturday, Sunday and from December 30 to January 3)  
See back cover for more details. \*Reservations cannot be made on the day garbage is brought in for disposal.

Disposal fee for specially designated items that are difficult to dispose of properly  
There is no size limit for specially designated items that are difficult to dispose of properly.

Item	Disposal fee
Mattress with springs	1,650yen
Sofa with springs (seating for two or more people) one-piece non-detachable type	1,650yen
Sofa with springs (seating for one person)	550yen
Supporting frame for clothesline poles (with concrete base; one frame)	550yen
Car battery	550yen
Tire (one tire) A wheel with a tire is treated as one item	550yen
Rim (one rim) A wheel with a tire is treated as one item	550yen

\* Bed mat / sofa is treated as one item even if only the springs remain after being dismantled.

## Individual curbside collection

On a reservation basis Payment with fee coupons (fees are charged)

\* Refer to page 10 for items subject to the Home Appliance Recycling Law. See page 11 for computers.  
\* In addition to the "Items that cannot be collected or processed by the city" on pages 10 and 11, there are items that cannot be collected by individual curbside collection, such as garden trees, felled trees, etc.  
\* Only household waste can be taken out. Commercial waste are not accepted.

### Disposal fee for large-sized waste, etc.

- Waste with a maximum side or diameter of 90 cm or more and less than 2 m in length  
550 yen per item



### 1 Measure the size of item (height, length, width) for disposal

Check the number of items when putting out multiple items.  
Check for springs in sofas, etc.  
Make sure to measure the items before applying.

### 2 Application for collection can be made online or by calling the Large-sized Waste Reception Center

How to apply by phone 1 Garbage type and size 2 Quantity (up to 4 at a time) 3 Telephone number  
4 Name 5 Give your address.

\* Collection may take about a month, so it is advised to apply early.

### 3 Pay the fee in advance and receive the "Saitama City Large-Sized Waste Disposal Fee Coupon" (sticker)

#### Concerning the Large-Sized Waste Disposal Fee Coupons

- After purchase, coupons cannot be reissued and refunds cannot be made.
- To prevent the illicit use of tickets, each ticket is designed to break if removed after it is put on an item of trash. Please note that damaged tickets cannot be used.
- When purchasing a ticket, make sure that it is stamped with the date of purchase.
- Keep the receipt in a safe place until collection is completed.

#### Stores handling waste disposal fee coupons (as of January 2023)

- Seicomart, 7-Eleven, Daily Yamazaki, Newdays (excluding those located inside the train station gates), Family Mart, Ministop, and Lawson stores within the city.
- \* Coupons may not be available at some shops.
- Daily Life Support Office of each ward office, ward branch offices, and administrative service windows

### 4 Attach the Large-Sized Waste Disposal Fee Coupon (sticker) to the item

Fill in the blank area on the coupon with the collection date, reception number, and type of waste. Put the ticket on each item of large-sized waste so it is clearly visible. (See the back of the coupon for more details.)

### 5 Take out large-sized waste on the specified collection date

Take the items for disposal to the designated location no later than 8:30 a.m. on collection day. You are not required to be present at the time of collection. Collection is not done indoors (inside the building in the case of an apartment complex) or in areas other than one's home (company, store, rental box, etc.).

- \* Prior notification is required for any changes at least 3 business days before the specified collection date. (It may not be possible to add or change items at the time of collection)
- \* Those who wish to have more than one item for collection should make a reservation for collection again after the collection is completed.
- \* Cancellations on the day of collection are not accepted.
- \* Only household waste is collected. \*One reservation per household (up to 4). \*For one-time large amounts of waste due to moving, etc., see page 8.

The collection time cannot be guaranteed.



Large-sized waste  
Bring directly,  
Individual curbside  
collection



# Items that cannot be collected or processed by the city

## Items subject to the Home Appliance Recycling Law

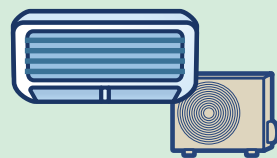
### Applicable items

● TV (CRT, LCD, plasma type)

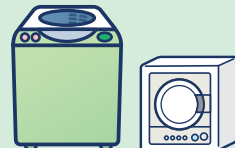


\*Among LCD TVs, Organic EL TVs and those that use a primary battery or storage battery as a power source (e.g., portable LCD TVs) are not applicable equipment.  
\*There are also some products that do not fall under applicable equipments, such as rear-projection TVs, etc.

● Air conditioners



● Washing machines and clothes dryers



● Refrigerators, freezers, wine cellars



These items are designated by the Home Appliance Recycling Law to be ultimately returned to manufacturers for remerchandising and recycling.

### Concerning the recycling fee

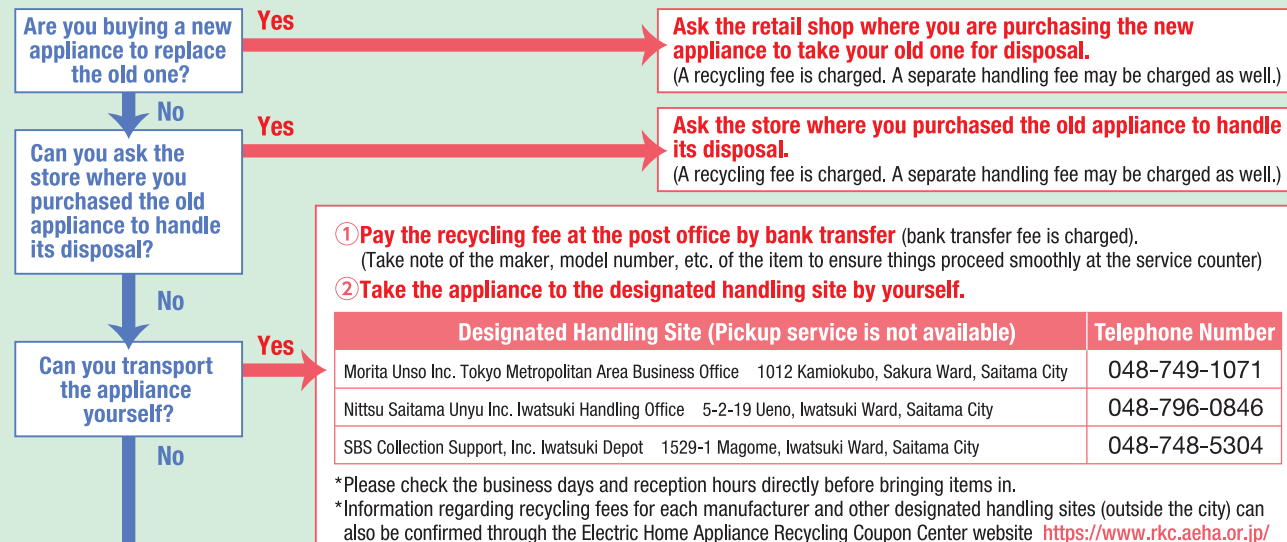
**Home Appliance Recycling Coupon Center** Reception hours: 9:00-18:00 (closed on Sundays and public holidays)  
<https://www.rkc.aeha.or.jp/> Please contact **TEL No. 0120-319640.**

### What is a recycling fee?

This is the cost for the manufacturer, etc., to recycle home appliances that they collect. Prices are set for each manufacturer. After confirming the manufacturer and the fee, **please pay using the designated form (Home Appliance Recycling Coupon) at the post office. A separate transfer fee will be charged.**

\* Items subject to recycling may be added or recycling fees may change due to revisions to laws and regulations.

### Disposal method



## How to dispose of fire extinguishers (Put out spray fire extinguishers with Harmful and Dangerous Waste)

Due to the special high-pressure container structure of fire extinguishers, the city's handling facilities cannot process them. Application for disposal of used fire extinguishers can be made at a recycling service window after purchasing a recycling sticker or by bringing it directly to the counter.



**For information about recycling service windows and how to purchase recycling stickers, consult with the Fire Extinguisher Recycling Promotion Center**  
<https://www.ferpc.jp/> TEL 03-5829-6773

## How to dispose of personal computers

### PC recycling by manufacturers

In principle, when purchasing a personal computer with the "PC Recycle" mark, the recycling fee is included in the price, and the manufacturer will handle its disposal for free.

For more details, consult with the **Personal Computer 3R Promotion Association**  
<https://www.pc3r.jp/> / Tel: 03-5282-7685

\*This may not apply to some products such as word processors, etc.

### Collection of small household appliances by the city (free)

▶ See page 12

\*Items are not collected at collection stations or from homes.

### Home collection by a private company (free if the main unit is included)

▶ See page 12

\*However, CRT display is 3,300 yen / 1 unit

\*Collection from home and data erasure service are also available.



### Applicable items



● CRT display



● Desktop PC (main unit)

● Laptop computer



● LCD display

## How to dispose of motorcycles

Domestic manufacturers, import companies and dealers work together to collect and recycle discarded motorcycles. Although no recycling fee is charged when using the Motorcycle Recycling System, a separate collection / transportation fee may be assessed depending on the place of disposal.

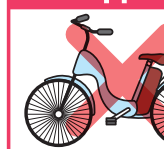
For more details, call the

**Motorcycle Recycling Call Center at Tel: 050-3000-0727 (9:30 - 17:00 / closed on Saturdays, Sundays, national holidays and year-end / New Year holidays).**

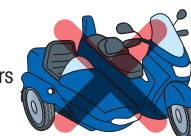
Confirmation can also be done through the website (<https://www.jarc.or.jp/motorcycle/>).

\*Even if you disassemble it yourself, the city will not accept it.

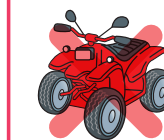
### Not applicable



Side cars



Power-assisted electric bicycle



All-Terrain Vehicle (buggy car)



Electric kick scooters



Microcars

## Items that are difficult to dispose of by crushing (for pianos, organs, and electronic organs, see page 14 and page 16)

**For example** : engine equipment, mortars, fireproof safes, steel drums, bathtubs, wire ropes, tree branches, roots and trunks with a diameter of 10 cm or more or a length of 90 cm or more, solar energy panels, hydraulic jacks, car parts, stainless steel products such as sinks and range hoods, etc., porcelain enamelware, gypsum boards, outdoor kerosene tanks, springs, electric pianos, oil heaters, etc.

### Garbage that are difficult to dispose of by crushing

It may be processed by the licensed company below. Consult directly for more details. (Only those discharged from ordinary households)

▶ Also refer to the Garbage Sorting Quick Reference Chart on pages 14-17.

**Licensed company: Taisei Co., Ltd. Tel: 048-685-8161 Address: 5 -12-1 Ohara, Urawa Ward, Saitama City**  
<https://u-taisei.co.jp/>



## Other items that the city cannot collect or dispose of

**Please consult with a retailer, manufacturer, or specialized dealer concerning items that cannot be collected or disposed of by the city.**

● **Waste that can be explosive or flammable** 【Examples】 gas cylinders, petroleum / gasoline, mineral fuel such as kerosene, etc.

● **Hazardous waste** 【Example】 volatile oil, agricultural chemicals, powerful drugs, chemicals, etc.

● **Garbage that may carry risk of infection, such as medical injection needles**

【Example】 : Insulin injection needles, drip infusion needles for personal use, etc.

→ Return it to the medical institution (hospital, clinic, dispensing pharmacy) that issued the prescription.

\*Disposing of the above three types of wastes at a household waste collection station can lead to serious accidents involving the lives of collection workers and disposal facility staff, so make sure to consult with the store, manufacturer, or specialized dealer.



### Equipment containing Freon

● For items subject to the Home Appliance Recycling Law → See Page 10.

● For garbage other than items subject to the Home Appliance Recycling Law → Request collection from dealers, manufacturers, or the **Saitama Prefecture Refrigeration and Air Conditioning Industry Association** (Tel: 048-883-7075) or bring it directly to the city's disposal facility along with a certificate showing that freon has been removed.

### Garbage from business activities

Example: Garbage generated by offices, dealers, stores, factories, hospitals, collective housing management, individual businesses, various organizations, etc.

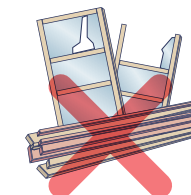
(For more details, visit the Saitama City website (<https://www.city.saitama.jp/001/006/008/001/p002410.html>))

### Garbage associated with dismantling or remodeling of houses by individuals

Examples: Earth and sand, concrete, block walls, waste materials, washstands, toilet bowls, doors (iron), etc.

### Stones, soil, sand (for gardening, etc.)

● **Waste that is larger than the "large-sized waste" collected individually by the city (large waste with a maximum side or diameter of 2m or more)**





# Small household appliances and batteries are collected!

## Items collected in the small household appliance collection box (yellow)

**Household appliances and their accessories (including adapters, cords, etc.) that can be inserted into the “30cm x 15cm” slot.**

\* For rechargeable batteries such as lithium-ion batteries, etc., that are built into small household appliances, remove the batteries from the main unit, insulate them with tape, and put them in the “battery collection box” (white).



## Items collected in the battery collection box (white)

**Batteries (dry cell batteries, rechargeable batteries, button batteries) should be insulated with tape and placed in the battery collection box!**

\* If the rechargeable battery cannot be removed from the main unit, place the main unit in the small household appliance collection box. If the size does not fit, it will be brought into the facility as follows.

## Installation location of the collection box

The collection time is the same as the business hours of each facility.

<b>Nishi Ward</b>	● Nishi Ward Office ● Mamiya Community Center ● Seibu Cultural Center
<b>Kita Ward</b>	● Kita Library ● Omiya Seibu Library ● Osato Community Center ● Miyahara Community Hall ● Miyahara Community Center ● Tokyo Gas Lifeval Omiya, Omiya Store (Private)
<b>Omiya Ward</b>	● Omiya Ward Office ● Mihashi Community Center ● Onari Community Center ● Omiya Higashi Community Center ● Omiya Library ● Takahana Community Center
<b>Minuma Ward</b>	● Minuma Ward Office ● Haruno Library ● Higashi Omiya Community Center ● Nanasato Community Center ● Katayanagi Community Center ● Minuma Kenbunkan
<b>Chuo Ward</b>	● Chuo Ward Office ● Yono Library ● Yono Minami Library ● Nishi Yono Community Hall ● Suzuya Community Center ● Kamiochiai Community Center
<b>Sakura Ward</b>	● Sakura Ward Office ● Tajima Community Center ● Tsuchiai Branch ● Okubo Community Center
<b>Urawa Ward</b>	● Urawa Ward Office ● Central Library ● Kishicho Community Center ● Ryoke Community Center ● Urawa Minami Community Center ● Tokiwa Community Center
<b>Minami Ward</b>	● Minami Ward Office ● Minami Urawa Community Center ● Buzo Community Center ● Yada Community Center ● Nishi Urawa Community Center ● Mutsuji Community Center ● Zenmae Community Center ● Tokyo Gas Lifeval Urawa Musashi Urawa Store (Private)
<b>Midori Ward</b>	● Midori Ward Office ● Obusato Community Center ● Misono Community Hall ● Misono Community Center
<b>Iwatsuki Ward</b>	● Iwatsuki Ward Office ● Community Center Iwatsuki ● Iwatsuki Nanbu Community Center ● Fureai Plaza Iwatsuki ● Iwatsuki Honmaru Community Center

\*To confirm the status of the facilities, please contact each facility.

## What if it doesn't fit in the collection box?

The collection time is the same as the business hours of each facility.

Small household appliances can be brought directly to the city's waste disposal facility.

**[Items]** Applicable items (no size restrictions) Examples: desktop computers, HDD recorders, CD players, battery-powered vacuum cleaners, etc.

\*For other items, see the city's website (search for “small household appliances” on the top page).

**[Location]** City waste disposal facilities (excluding the Eastern Area Environmental) \*See the back cover.

## Home collection by a private contractor

ReNet Japan Recycle Co., Ltd., a nationally certified business operator which has a partnership agreement with the city of Saitama, provides collection of “PCs and small household appliances” using door-to-door courier service.

### Individual collection through a courier service

After applying in advance, home collection will be done on the desired date and time (open all year round, at the earliest, the next day).

**① Application**

Apply from PC or smartphone

**② Pack items**

Any number of items can be placed as long as it fits in the box

**③ Collect immediately**

Collection on the desired date and time (the next day, at the earliest)

**④ Payment method**

- Credit card
- Bank Net payment
- Cash

\* Pay the fee to the Sagawa Express driver at the time of collection.

**1 box free of charge for collection of PC which includes the main unit**  
For monitors only, etc., which does not include the main unit and from the second box onwards, fees will apply.  
\*However, CRT display is 3,300 yen / 1 unit

**Collection fee: 1,650 yen per box (tax included)**  
\*Any number of items can be placed as long as it fits in the box!  
\*PC data erasing software provided free of charge!  
Box size: 3 sides total 140 cm / 20 kg or less

**Click here for detailed application**

ReNet Japan **Search**

<https://www.renet.jp/> **TEL0570-085-800**

Telephone reception hours 10:00 to 17:00  
(\*Excluding year-end and New Year holidays)

Business operator certified by the Small Household Appliance Recycling Law  
Minister of the Environment / Minister of Economy, Trade and Industry

ReNet Japan Co., Ltd.

# Try using various systems!

## About the fureai (rapport) collection system

**Contact information**

Area Sanitation Office in-charge: See back cover for contact information (See pages 18 and 19 for the office-in charge of each district.)

This is a system in which city officials visit homes to pick up garbage for people who cannot bring their own garbage to collection stations, such as seniors, people with disabilities, etc.

### Applicable persons

- **Seniors:** Elderly people aged 65 and above who live alone.
- **Person with disability:** A person with a disability who lives alone.

\* Family members living together with elderly or disabled persons are eligible if the family member is elderly or disabled and cannot dispose of the garbage to the collection station.

\* This may not be applicable to those who have relatives, siblings, or children living nearby who can take out the garbage.

### Collection method

- As a general rule, garbage is collected once a week from the front door, etc
- Burnable waste, unburnable waste, harmful and dangerous waste, and recyclables type 1 and 2 will be collected.
- Large-sized waste, and items subject to the Home Appliance Recycling Law (TVs, air conditioners, refrigerators / freezers, washing machines / dryers), as well as items that are difficult to dispose of at city facilities such as motorcycles, etc., and one-time large amounts of waste due to moving places, etc., **cannot be collected.**

### Application method

- ① After consulting with the Area Sanitation Office in-charge, the person who will use the service or a proxy should submit the “Fureai (rapport) collection use application form”.
- ② A city official will visit the applicant's home to investigate the situation, and if the use is approved, collection will begin.

## Using the local information site of a private business operator concerning reuse

JMTY Inc., which has a partnership agreement with the city of Saitama, operates a regional information site called “JMTY”, in which smartphones or computers can be used to remove or dispose of unnecessary home furnitures (sofas, beds, shelves, etc.), bicycles, etc., **and look for a taker in the area without incurring disposal costs.**

### No disposal fee

Since items are being transferred, disposal is free of charge, and no fees to JMTY as well.

### Trading locally

In principle, no delivery procedures are required when dealing locally.

### Same-day trading is possible

At the earliest, the transaction will be completed on the day of listing.

\* **“JMTY” transactions are transactions between individuals. Please check the terms and conditions before using.**  
For inquiries, contact reuse@jmtty.jp.

### How to use

The website and app are available for use.

- Access the website from a PC or smartphone
- Install the iOS and Android apps



## Food waste disposal container, etc Concerning the Purchase Cost Subsidy System

**Contact information**

Waste Management Division  
Business waste management section  
**TEL 048-829-1335**

In order to compost or reduce the amount of food waste discharged from general households, part of the purchase costs will be subsidized for those who purchase food waste disposal containers, etc., within the fiscal year. Contact the Waste Management Division for details on how to apply, etc.



## Concerning collection stations for household waste

**Contact information**

Area Sanitation Office in-charge or Household Waste Section / Waste Management Division  
(See pages 18 and 19 for the offices in charge of each district.) See back cover for contact information

The installation (site selection) and management (cleaning, etc.) of household waste collection stations are the responsibility of everyone who uses them.

Collection time varies depending on traffic conditions. Please take out garbage to the designated collection station by **8:30 in the morning** (5:30 a.m. in districts that collect burnable waste early in the morning), following the sorting method and the type of bag to be used. Also, **make sure to properly drain the water from raw garbage** and tie the mouth of the garbage bag before disposing. If an anti-crow protection net is installed, please cooperate in keeping the place clean by putting it on properly when disposing of garbage.

**Household waste collection stations are for household waste only, and waste coming out of businesses cannot be put out in this site.**



Garbage Sorting Quick Reference Chart

BW Burnable Waste UBW Unburnable Waste R-1 Recyclable Resources Type-1 (bottles, cans, PET bottles, food packing wraps)  
H&D Harmful and Dangerous Waste LSW Large-sized waste / items that are difficult to dispose of properly ▶see page 9

Items	Sorting category	Notes on how to dispose, etc.
あ Iron	SHA	Place in the collection box May be disposed of as unburnable waste
Foot wipe mat	BW	
Oil (edible oil)	BW	Soak up in paper, etc., or solidify with a solidifying agent *Discharge of liquids is prohibited
Raincoats	BW	
Screen door	LSW	★2 In the case of individual curbside collection, 1 set of 2 pieces, up to 8 pieces of less than 90 cm may be put out with unburnable garbage
Album (for photos)	BW	
Aluminum foil	BW	
い Stone	×	Take to a landscaper or stone shop
Costume case	UBW	★2
Chair	UBW	★2
Strawberry pack <small>With ♻️ mark</small>	R-1	★1
Unicycle	UBW	★2
Itto (18-liter) can	UBW	After using up the contents
Earphone	SHA	Place in the collection box Can be disposed of as unburnable waste
Clothing	R-2	Wash and dry (put out next time, if on a rainy day)
Clothes dryer	×	Applicable items for home appliance recycling ▶See page 10
Ink cartridge	×	Take out to a dedicated collection box at the store, ward office, branch office, or community center
Bag for instant noodles <small>With ♻️ mark</small>	R-1	★1
Beverage paper pack	R-2	Make sure to remove the plastic part, as paper pack for milk, etc.
Beverage paper pack (with silver aluminum inside)	BW	
う Windbreaker	BW	
Flowerpot (unglazed)	UBW	
Flowerpot (plant pot, made of plastic)	BW	Unburnable waste if 50 cm or more
Water dispenser container	BW	If there is a PET mark, dispose of it as Recyclable Resources Type-1
え Air conditioner	×	Applicable items for home appliance recycling ▶See page 10
AC adapter	SHA	Place in the collection box May be disposed of as unburnable waste
Liquid Crystal Display TV	×	Applicable items for home appliance recycling ▶See page 10
Artists' paint	BW	
MD / MD case	BW	
LED bulb	UBW	
Extension cord	SHA	Place in the collection box. Can be disposed of as burnable waste. Remove the cord reel and take out with unburnable waste.
お Oil	BW	Soak in a commercially available waste oil pack, etc. *Discharge of liquids is prohibited.
Oil can	UBW	After using up the contents
Oil heater	×	Through a licensed contractor (Taisei Co., LTD.) ▶See page 11
Audio component	UBW	★3
Audio rack	UBW	★2
Motorcycle (including moped)	×	Through dealers and specialized contractors ▶See page 11
Oven toaster	UBW	
Bag for snacks <small>With ♻️ mark</small>	R-1	
Potty	UBW	Dispose of waste in the toilet
Toys	BW	Put out items made of metal with unburnable waste
Organ	LSW	Directly brought in or through individual curbside collection ▶See page 9
Warm water washing toilet seat (Washlet)	UBW	
Thermometer	UBW	Anything that uses mercury must be put out with Harmful and Dangerous Waste. Place in the same bag as fever thermometers.
か Curtain	R-2	Tie it up with a string (put out next time, if on a rainy day)
Carpet	BW	★2 Tie it up to less than 90 cm
Carbon paper	BW	
Shell	BW	
Flashlight	SHA	Place in the collection box. Can be disposed of as unburnable waste.
Body warmer (disposable)	BW	
Mirror	UBW	★2 Wrap broken items in paper, etc., and write "waremono" (broken item) before disposal.
Umbrella	UBW	★2
Humidifier	UBW	
Gas cylinder (LP, propane)	×	Through dealers and specialized contractors
Gas range (table)	UBW	Remove the battery. Through a licensed contractor (Taisei Co., LTD.) for built-in ▶See page 11
Cassette stove (tabletop type)	UBW	Remove the cartridge type cylinder and battery

Items	Sorting category	Notes on how to dispose, etc.
か Cassette tape	BW	
Cassette cylinder <small>(Cartridge type cylinder)</small>	H&D	After using up the contents, put it in a separate transparent bag ▶See page 7
Gasoline	×	Through dealers and specialized contractors
Cutter	UBW	Wrap the blade in paper, etc.
Cup noodle container <small>With ♻️ mark</small>	R-1	★1
Heated electronic cigarette	BT	Place in the battery collection box.
Bag	BW	It is not necessary to remove metal parts such as fasteners forcibly.
Thumbtacks	UBW	Wrap it in paper to prevent the bag from tearing.
Vase	UBW	Wrap broken items in paper, etc., and write "waremono" (broken item) before disposal.
Paper diapers	BW	Dispose of waste in the toilet
Razor	UBW	Wrap the blade in paper, etc.
Paper bag	R-2	Put out as Other Paper
Camera	SHA	Place in the collection box Can be disposed of as unburnable waste
Glass	UBW	Wrap broken items in paper, etc., and write "waremono" (broken item) before disposal.
Calendar	R-2	Put out as Other Paper *Metal parts are unburnable waste
Leather products / leather jackets	BW	
Tile	LSW	Directly brought in or by individual curbside collection ▶See page 9 Up to 10 items per day if brought in directly, 1 set of 4 pieces, up to 8 pieces for individual curbside collection
Desiccant (drying agent)	BW	
Dry cell battery	H&D	★3 Insulate and place in a separate transparent bag ▶See page 7
Thermal paper	BW	
き Guitar	UBW	★2
Tree branches / wood chips	BW	Tie up in a bundle of less than 30 cm in diameter only if the thickness is less than 10 cm and the length is less than 90 cm, for up to 3 bundles at a time. When bringing in directly, the same conditions apply for thickness and length.
Clothes (kimono)	R-2	Tie it up with a string (put out next time, if on a rainy day)
Stepladder	UBW	★2
Teapot	UBW	
Milk carton	R-2	Wash, open up, let dry and tie only milk cartons
Textbook	R-2	Put out as magazines
Safety box	×	Through a licensed contractor (Taisei Co., LTD.) ▶See page 11 *Handheld safes that are not fireproof should be put out with unburnable waste.
< Inflator (pump)	UBW	
Air cleaner	UBW	★2 For items that use freon gas (chlorofluorocarbon), ask a specialized contractor or bring them in directly with a certificate showing that the freon gas has been collected.
Cooler box	UBW	★2
Nails	UBW	Wrap it in paper, etc., to prevent the bag from tearing.
Grass waste (dead leaves, etc.)	BW	After drying, up to 3 bags at a time
Medicine <small>(cold medicine, disinfectant, etc.)</small>	BW	Discharge of liquids is prohibited
Outer bag of fruits <small>With ♻️ mark</small>	R-1	★1
Shoes	BW	
Socks	R-2	Tie it up with a string (put out next time, if on a rainy day)
Cushion	BW	The cotton inside is burnable waste. The cover goes to Recyclable Resources Type-2
Wheelchair (with electric motor)	×	Through a licensed contractor (Taisei Co., LTD.) ▶See page 11 *Those without motors are unburnable garbage.★2
Car parts	×	Through a licensed contractor (Taisei Co., LTD.) ▶See page 11 *Tires, wheels, and batteries can be collected through individual curbside collection
け Fluorescent tubes / lamps	H&D	Items 90 cm or more can also be put out, placed in a separate transparent bag. * Glow lamps are unburnable waste.
Mobile phones, PHS	SHA	They are also collected at stores.
Wool products (clothing)	R-2	Tie it up with a string (put out next time, if on a rainy day)
Game console	SHA	
Cosmetic container	UBW	Plastic items are burnable waste
Ketchup container	BW	Because dirt cannot be removed
Sphygmomanometer	SHA	Place in the collection box. Can be disposed of as unburnable waste. Take out with Harmful and Dangerous Waste if it contains mercury.
Motorized bicycle	×	Through dealers and specialized contractors ▶see page 11
ち Tools	UBW	DIY
Advertisement	R-2	Bind together with newspapers
Coat	R-2	Tie it up with a string (put out next time, if on a rainy day)
Coffee maker	SHA	Place in the collection box. Can be disposed of as unburnable waste.
Straw mat	BW	★2 Tie it up to less than 90cm
Japanese foot warmer (kotatsu)	UBW	★2 1 item including kotatsu board
Cup (glass)	UBW	Paper and plastic items are burnable waste.
Copy machine	UBW	★2

R-2 Recyclable Resources Type-2 (old paper and fabrics)

SHA Small Household Appliances ▶see page 12 BT Batteries ▶see page 12 ✕ Disposal is prohibited

Items	Sorting category	Notes on how to dispose, etc.
ち Rubber gloves	BW	
Rice bin	UBW	★2
Rice bag <small>With ♻️ mark</small>	R-1	★1 Paper products are burnable waste.
Golf clubs	LSW	Directly brought in or through individual curbside collection ▶See page 9 If less than 90 cm, put out with unburnable waste.
Golf bag	UBW	★2
Golf ball	BW	
た Surfboard	LSW	Directly brought in or through individual curbside collection ▶See page 9
Sitting chair	UBW	★2
Sideboard	LSW	Directly brought in or through individual curbside collection ▶See page 9 If less than 90 cm, put out with unburnable waste.
Wallets	BW	
Psyllium (chemical light)	BW	For battery-powered penlights, remove the batteries and place them in the collection box, or with unburnable waste.
Liquor pack	BW	Because the inside is processed with aluminum foil
Liquor bottle	R-1	Excludes bottles of homemade fruit wine
Low table	UBW	★2
Magazine	R-2	Tie into a bundle with magazines Together with catalogs, weekly magazines, etc.
Pesticide (spray can)	H&D	After using up the contents, put it in a separate transparent bag
Japanese cushion	BW	Up to 5 pieces at a time
Plate (pottery, steel, glass)	UBW	
Sandals	BW	
Tricycle	UBW	★2
じ Sheets	R-2	Tie it up with a string (put out next time, if on a rainy day)
CD, CD case	BW	
Jeans, denim jacket	R-2	Tie it up with a string (put out next time, if on a rainy day)
Bottle for pickling homemade fruit wine (plum wine, etc.)	UBW	
Underwear	BW	
Underlay	BW	
Medicated plaster	BW	
Bicycle	LSW	Directly brought in or through individual curbside collection ▶See page 9 If less than 90 cm, put out with unburnable waste.
Bicycle (with electric motor)	LSW	Remove the battery. Directly brought in or through individual curbside collection ▶See page 9
Bicycle tubes	BW	
Tracksuit	R-2	Tie it up with a string (put out next time, if on a rainy day)
Photo	BW	
Photo book (magazine)	R-2	Tie into a bundle with magazines
Shirt	R-2	Tie it up with a string (put out next time, if on a rainy day)
Jack (pantograph type for cars)	LSW	
Jack <small>(Dharma-type hydraulic jack for cars)</small>	×	
Jacket	R-2	Tie it up with a string (put out next time, if on a rainy day)
Shampoo / rinse container	BW	
Juicer	UBW	
Carpet	BW	★2 Tie it up to less than 90cm
Rechargeable battery	BT	Place in the battery collection box.
Shredder waste	BW	Because it cannot be recycled, remove the air from the bag.
Fire extinguisher	×	Through dealers and specialized contractors ▶see page 10 *Put out spray can type with Harmful and Dangerous Waste.
Ruler	BW	Put out items made of metal with unburnable waste
Paper screen doors	LSW	Directly brought in or through individual curbside collection ▶See page 9 If less than 90 cm, put out with unburnable waste.
Lighting equipment	UBW	★2 Remove the fluorescent tube and put out with Harmful and Dangerous Waste.
Soy sauce container	R-1	Rinse the inside
Water sprinkler (made of plastic)	BW	Put out items made of metal with unburnable waste
Food tray <small>With ♻️ mark</small>	R-1	★1
Cooking oil	BW	Soak up in paper, etc., or solidify with a solidifying agent *Discharge of liquids is prohibited
Cooking oil containers <small>(made of plastic bottles, cans)</small>	BW	Empty the contents
Cooking oil containers <small>(bottles, cans)</small>	UBW	Empty the contents
Dehumidifier	UBW	For items that use freon gas (chlorofluorocarbon), ask a specialized contractor or bring them in directly with a certificate showing that the freon gas has been collected.
Dehumidifying agent	BW	For items that collect water, remove the water from the container before disposal.
Dishwasher	UBW	Through a licensed contractor (Taisei Co., LTD.) for built-in ▶See page 11
Cupboard	LSW	Directly brought in or through individual curbside collection ▶See page 9 If less than 90 cm, put out with unburnable waste.

Items	Sorting category	Notes on how to dispose, etc.
し Tableware (ceramic items, glass)	UBW	Wrap broken items in paper, etc., and write "waremono" (broken item) before disposal.
Newspaper (including flyer insert)	R-2	Tie into a bundle with advertisements and flyers
す Water tank	UBW	★2
Water bottle	UBW	
Rice cooker	UBW	
Sweatshirts	R-2	Tie it up with a string (put out next time, if on a rainy day)
Suits	R-2	Tie it up with a string (put out next time, if on a rainy day)
Suitcase	UBW	★2
Skis, snowboards	LSW	Directly brought in or through individual curbside collection ▶See page 9 If less than 90 cm, put out with unburnable waste.
Ski wear	BW	
Ski, snowboard boots	UBW	The soft type are burnable waste
(Personal Computer) scanner	UBW	
Skateboard	UBW	
Stereo	UBW	★2 ★3
Stove	UBW	★2 Drain the kerosene and remove the battery *Also remove the kerosene from the main unit.
Stockings	BW	
Straw	BW	
Drainboard	LSW	Directly brought in or through individual curbside collection ▶See page 9 If less than 90 cm, put out with unburnable waste.
Spike shoes	BW	Remove metal fittings and dispose of as unburnable waste. If unable to remove, put them out with unburnable waste together.
Speakers	UBW	★2 ★3
Spoon (metal)	UBW	Plastic items are burnable waste
Spring mattress	LSW	Directly brought in or through individual curbside collection ▶See page 9
Spray can	H&D	After using up the contents, put it in a separate transparent bag ▶See page 7
Smartphone	SHA	Items with built-in batteries should be placed in the collection box.
Slippers	BW	
せ Sanitary items	BW	
Sweater	R-2	Tie it up with a string (put out next time, if on a rainy day)
Oil pump (plastic)	BW	For the motorized type, remove the battery and put out with unburnable waste
Jelly container <small>With ♻️ mark</small>	R-1	★1
Facial cleanser tube	BW	
Detergent container (refill pack)	BW	
Washing machine	×	Applicable items for home appliance recycling ▶See page 10
Clothespin	BW	
Electric fan	UBW	★2
Wash basin	BW	Put out items made of metal with unburnable waste
そ Cleaning cloth	BW	
Vacuum cleaner	UBW	★2 Remove the battery for cordless and robot types
Sauce container (plastic)	BW	Because dirt cannot be removed *For bottles, put out with unburnable waste
Sofa (with springs)	LSW	Directly brought in or through individual curbside collection ▶See page 9
Sofa (without springs)	LSW	Directly brought in or through individual curbside collection ▶See page 9 If less than 90 cm, put out with unburnable waste.
Sofa bed	LSW	Directly brought in or through individual curbside collection ▶See page 9
た Thermometer (using mercury)	H&D	Place in a separate transparent bag
Thermometer (others)	SHA	Place in the collection box. Can be disposed of as unburnable waste. Alcohol-based items should be taken out with unburnable waste.
Weight scale (digital type)	SHA	Place in the collection box. Can be disposed of as unburnable waste. Weight scale that are not digital type should be taken out with unburnable waste.
Tires <small>(for passenger cars) and motorcycles</small>	LSW	Directly brought in or through individual curbside collection ▶See page 9
Tire chains <small>(regardless of material quality)</small>	LSW	Directly brought in or through individual curbside collection ▶See page 9
Down jacket	BW	
Towel	R-2	Tie it up with a string (put out next time, if on a rainy day)
Bamboo	BW	Tie up in a bundle of less than 30 cm in diameter only if the thickness is less than 10 cm and the length is less than 50 cm, for up to 3 bundles at a time. When bringing in directly, the same conditions apply for thickness and length.
Bamboo skewers	BW	Wrap in paper, etc., or put it in a container such as detergent, etc..
Tatami <small>(if it can be divided into 3 parts)</small>	BW	Divide one sheet into three. Up to 1 tatami mat at a time
Tatami <small>(if it cannot be divided into 3 parts)</small>	LSW	Directly brought in or through individual curbside collection ▶See page 9 Up to 10 sheets per day if brought in directly. Up to 4 sheets at a time through individual curbside collection.
Table tennis racket	BW	
Deodorizer	BW	
Tupperware	BW	
Cigarette paper box	R-2	Put out with Other Paper, excluding plastic

★1...Food packaging plastics are items that can only be lightly rinsed clean to avoid wasting water resources. Other than that, put out with burnable waste!  
★2...Items over 90 cm and under 2 m should be brought in directly or collected through individual curbside collection ▶See page 9

★3...Also collecting as small household appliances. ▶See page 12  
Items not listed in the quick reference chart can be searched through the city's website or by using the garbage sorting app.

Please use the garbage sorting dictionary!  
さいたま市 ごみ分別辞典 Search

Those who have an app-compatible mobile phone can also use the Saitama City Garbage Sorting App (Sai-chan App). (See page 3 for app details)  
https://www.city.saitama.jp/001/006/010/003/p042612.html?page=dictionary



Garbage Sorting Quick Reference Chart

Please use the garbage sorting dictionary!  
さいたま市 ごみ分別辞典 Search

Those who have an app-compatible mobile phone can also use the Saitama City Garbage Sorting App (Sai-chan App). (See page 3 for app details)  
https://www.city.saitama.jp/001/006/010/003/p042612.html?page=dictionary



Garbage Sorting Quick Reference Chart





iOS version



Android version

**BW** Burnable Waste **UBW** Unburnable Waste **R-1** Recyclable Resources Type-1 (bottles, cans, PET bottles, food packing wraps) **R-2** Recyclable Resources Type-2 (old paper and fabrics)  
**H&D** Harmful and Dangerous Waste **LSW** Large-sized waste / items that are difficult to dispose of properly ▶see page 9 **SHA** Small Household Appliances ▶see page 12

Items	Sorting category	Notes on how to dispose, etc.
<b>た</b> Egg pack <small>With </small>	<b>R-1</b>	Put out paper pack with Other Paper under Recyclable Resources Type-2
Scrubbing brush	<b>BW</b>	
Drawers (chest)	<b>LSW</b>	Directly brought in or through individual curbside collection ▶See page 9 If less than 90 cm, put out with unburnable waste.
Dumbbell	<b>LSW</b>	Directly brought in or through individual curbside collection ▶See page 9
Cardboard	<b>R-2</b>	Fold and tie with a string
<b>ち</b> Child seat	<b>UBW</b> ★2	
Bowl	<b>UBW</b>	
Needle	×	Return to a medical institution, etc.
Tube (condiment container)	<b>BW</b>	Because dirt cannot be removed
Flyers	<b>R-2</b>	Tie into a bundle with newspapers and advertisements
<b>こ</b> Desk	<b>LSW</b>	Directly brought in or through individual curbside collection ▶See page 9 If less than 90 cm, put out with unburnable waste.
Weight stone for pickles (artificial stone)	<b>LSW</b>	Put out natural stones through dealers and specialized contractors
Soil	×	For small amounts (about 1 rice bowl), put out with burnable waste
Fishing rod	<b>BW</b> ★2	Put out carbon and glass fiber products with unburnable waste
Fishing rod reel	<b>UBW</b>	
<b>て</b> T-shirt	<b>R-2</b>	Tie it up with a string (put out next time, if on a rainy day)
DVD, DVD case	<b>BW</b>	
(Personal computer's) disk drive	<b>SHA</b>	Place in the collection box. Can be disposed of as unburnable waste.
Tissue paper box	<b>R-2</b>	Put out with Other Papers, excluding plastic
Table	<b>LSW</b>	Directly brought in or through individual curbside collection ▶See page 9 If less than 90 cm, put out with unburnable waste.
Handbook	<b>BW</b>	For metal fittings, remove the metal part. Put out metal parts with unburnable waste
Iron dumbbell	<b>LSW</b>	Directly brought in or through individual curbside collection ▶See page 9
Tennis racket	<b>UBW</b>	
Japanese towel	<b>R-2</b>	Tie it up with a string (put out next time, if on a rainy day)
Gloves	<b>R-2</b>	Tie it up with a string (put out next time, if on a rainy day)
TV	×	Applicable items for home appliance recycling ▶See page 10
TV stand	<b>UBW</b> ★2	
Electric carpet	<b>BW</b> ★2	Tie it up to less than 90cm
Electrical cord	<b>SHA</b>	Place in the collection box. If the diameter of the bundle is 20 cm or less, it can be disposed of as burnable waste. Place in the collection box. Can be disposed of as unburnable waste. Take out light bulbs with unburnable waste, and fluorescent tubes with Harmful and Dangerous Waste.
Desk lamp	<b>SHA</b> ★2	
Electric shaver	<b>SHA</b>	
Electric pot	<b>SHA</b>	Place in the collection box. Can be disposed of as unburnable waste.
Electric blanket	<b>BW</b> ★2	Tie it up to less than 90cm
Light bulb	<b>UBW</b>	Including LED bulbs Put out with Harmful and Dangerous Waste if mercury is used
Electronic organ	<b>LSW</b> ★4	Directly brought in or through individual curbside collection ▶See page 9
Electronic piano	<b>LSW</b> ★4	Directly brought in or through individual curbside collection ▶See page 9
Microwave	<b>UBW</b>	
Calculator / Electronic diary	<b>SHA</b>	Place in the collection box Can be disposed of as unburnable waste
Battery	<b>H&amp;D</b>	Insulate and put in a separate transparent bag Place rechargeable, button type in the battery collection box
Tempura oil	<b>BW</b>	Soak up in paper, etc., or solidify with a solidifying agent *Discharge of liquids is prohibited
Telephone set	<b>SHA</b>	Place in the collection box Can be disposed of as unburnable waste
<b>と</b> Toilet paper tube (core)	<b>R-2</b>	Put out with Other Paper
Pottery	<b>UBW</b>	Wrap broken items in paper, etc., and write "waremono" (broken item) before disposal.
Tofu container <small>With </small>	<b>R-1</b> ★1	
Kerosene	×	Through dealers and specialized contractors
Kerosene cans (itto 18-liter cans, plastic tank containers)	<b>UBW</b>	Make sure to empty the contents
Kerosene tank (outdoor use)	×	Through a licensed contractor (Taisei Co., LTD.) ▶See page 11
Toaster	<b>UBW</b>	
Clock / wrist watch	<b>SHA</b>	Place in the collection box Can be disposed of as unburnable waste
Clay pot	<b>UBW</b>	
Dryer	<b>SHA</b>	Place in the collection box Can be disposed of as unburnable waste
Bird cage (metal)	<b>UBW</b>	Items other than metals are burnable waste
Tray (for food) <small>With </small>	<b>R-1</b> ★1	
Dressing container (plastic)	<b>BW</b>	Because dirt cannot be removed *For bottles, put out with unburnable waste
<b>な</b> Knife (metal)	<b>UBW</b>	Wrap in paper, etc., and write "knife" before disposal.

★1...Food packaging plastics are items that can only be lightly rinsed clean to avoid wasting water resources. Other than that, put out with burnable waste!  
★2...Items over 90 cm and under 2 m should be brought in directly or collected through individual curbside collection ▶See page 9  
★3...Also collecting as small household appliances. ▶See page 12  
★4...For keyboards, the limit is up to 2 tiers which can be carried by two adults. For items larger than this, request the store to dispose of them.

Items	Sorting category	Notes on how to dispose, etc.
<b>な</b> Boots	<b>BW</b>	
Natto container	<b>BW</b>	Because dirt cannot be removed
Pot	<b>UBW</b>	
<b>に</b> Doll	<b>BW</b>	Ceramics are unburnable waste
Doll case	<b>UBW</b> ★2	
<b>ぬ</b> Stuffed toys	<b>BW</b> ★2	
Pieces of cloth	<b>R-2</b>	Tie it up with a string (put out next time, if on a rainy day)
<b>ね</b> Necktie	<b>BW</b>	
Screws	<b>UBW</b>	Bundle together to prevent the bag from tearing.
Net (for vegetables, and fruits) <small>With </small>	<b>R-1</b> ★1	
Clay	<b>BW</b>	
<b>の</b> Farm equipment	×	Through a licensed contractor (Taisei Co., LTD.) ▶See page 11
Pesticides	×	Through dealers and specialized contractors
Notebooks	<b>R-2</b>	Put out with magazines
Saw	<b>UBW</b>	Wrap the blade in paper, etc.
<b>は</b> Motorcycle (including mopeds)	×	Through dealers and specialized contractors ▶See page 11
Postcards	<b>R-2</b>	Put out with Other Paper
Bucket	<b>UBW</b>	Plastic items with a diameter of 50 cm or less are burnable wastes
Scissors	<b>UBW</b>	Wrap the blade in paper, etc.
Ladder	<b>LSW</b>	Directly brought in or through individual curbside collection ▶See page 9 If less than 90 cm, put out with unburnable waste.
Personal Computer main unit (notebook type also)	×	★3 ▶See page 11
PC display	×	★3 ▶See page 11
Battery (for passenger cars and motorcycles)	<b>LSW</b>	Directly brought in or through individual curbside collection ▶See page 9
Battery (for motor-assisted bicycle)	<b>BT</b>	Place in the battery collection box.
Bat (metal / wooden)	<b>UBW</b> ★2	
Styrofoam	<b>BW</b>	Boxes, cushioning materials for home appliances, packing materials, etc.
Styrofoam tray <small>With </small>	<b>R-1</b> ★1	
Fireworks	<b>BW</b>	After thoroughly soaking in water
Panel heater (without oil)	<b>UBW</b> ★2	× if it contains oil. To a licensed contractor (Taisei Co., LTD.) ▶See page 11
Toothbrush	<b>BW</b>	Remove the battery from the electric toothbrush, and place in the collection box.
Toothpaste tube	<b>BW</b>	
Needles (sewing needles, fishing hooks)	<b>BW</b>	Wrap in paper, etc., to prevent it from popping out of the garbage bag. Place in a container such as detergent containers, etc.
Wire	<b>UBW</b>	
Halogen heater	<b>UBW</b> ★2	
Hangers	<b>UBW</b>	Plastic items are burnable waste
Handkerchief	<b>R-2</b>	Tie it up with a string (put out next time, if on a rainy day)
Bag for bread <small>With </small>	<b>R-1</b> ★1	
<b>ひ</b> Piano	×	Through dealers and specialized contractors Electronic pianos can be brought in directly or through individual curbside collection.
Beaded cushion	<b>BW</b>	
Shaver	<b>UBW</b>	Items with built-in batteries should be placed in the collection box.
Video camera	<b>SHA</b>	Items with built-in batteries should be placed in the collection box.
Videotape, case	<b>BW</b>	
Video deck	<b>UBW</b> ★3	
Plastic string	<b>BW</b>	
Vinyl pool	<b>BW</b> ★2	Tie it up to less than 90cm
Plastic bag	<b>BW</b>	Including commercially available garbage bags
Bottles (food, nutritional drinks, etc.)	<b>R-1</b>	Rinse the inside remove lids and stoppers, and put out plastic items with Food Packaging Plastics. Other than that, put out with unburnable waste.
Bottles (cosmetics, pharmaceutical products)	<b>UBW</b>	
Pinch hangers	<b>UBW</b>	Plastic items are burnable waste
<b>ふ</b> FAX machine	<b>UBW</b> ★3	
Fan heaters	<b>UBW</b> ★2	Remove the kerosene from both the tank and the main unit.
Film, film case	<b>BW</b>	
Envelopes	<b>R-2</b>	Put out with Other Paper *Remove the film for window envelopes
Fork (metal)	<b>UBW</b>	Plastic items are burnable waste
Japanese sliding door	<b>LSW</b>	Directly brought in or through individual curbside collection ▶See page 9 If less than 90 cm, put out with unburnable waste.

**BT** Batteries ▶see page 12 **×** Disposal is prohibited

Items	Sorting category	Notes on how to dispose, etc.
<b>ぶ</b> Buddhist altar	<b>UBW</b> ★2	Make sure to dismantle
Futon	<b>BW</b>	Tie it up to less than 90 cm, up to 1 sheet at a time
Futon (two sheets or more)	<b>LSW</b>	Directly brought in or through individual curbside collection ▶See page 9
Futon dust beater / Futon pinchers	<b>BW</b>	
Frying pan	<b>UBW</b>	
Blinds	<b>BW</b> ★2	Put out items made of metal with unburnable waste
Planter	<b>UBW</b>	Plastic items with a diameter of 50 cm or less are burnable waste
Printer	<b>UBW</b>	Remove the cartridge
Pudding container <small>With </small>	<b>R-1</b> ★1	
Block	<b>LSW</b>	Directly brought in or through individual curbside collection ▶See page 9 Up to 10 items per day if brought in directly; 1 set of 4 pieces, up to 8 pieces for individual curbside collection
Floppy disk case	<b>BW</b>	
Bathtub lid	<b>UBW</b> ★2	
Bath mat	<b>BW</b> ★2	Tie it up to less than 90cm
Propane gas cylinder	×	Through dealers and specialized contractors
<b>へ</b> Bed (including nursing care beds)	<b>LSW</b>	Directly brought in or through individual curbside collection ▶See page 9
Sand for pet litter	<b>BW</b>	Remove the filth and mix with burnable waste gradually in small batches
Pet's feces	<b>BW</b>	Put feces in a waste disposal bag, tie tightly so that no odors come out, and place in a bag for burnable waste. Bring in directly to dispose of all at once.
Pet food can	<b>R-1</b>	For items that are too dirty to clean, put out with unburnable waste
PET bottles	<b>R-1</b>	Rinse the inside (remove the lid and label, then put out with Food Packaging Plastic)
Headphones	<b>SHA</b>	Place in the collection box. Can be disposed of as unburnable waste
Plywood	<b>BW</b> ★2	Only if less than 10 cm thick and less than 90 cm long
Stroller (baby carriage)	<b>UBW</b> ★2	
Baby bath	<b>UBW</b> ★2	
Belt	<b>BW</b>	Remove metal and put out with unburnable waste
Helmet	<b>UBW</b>	
Paint	<b>BW</b>	Soak up in paper, etc., or solidify with a solidifying agent *Discharge of liquids is prohibited
Bento container (plastic) <small>With </small>	<b>R-1</b> ★1	
Penlight	<b>SHA</b>	For battery penlights, remove the batteries and place in the collection box, or put out with unburnable waste
<b>ほ</b> Wheel (of a car)	<b>LSW</b>	Directly brought in or through individual curbside collection ▶See page 9
Air freshener case	<b>BW</b>	
Hat (fabric)	<b>R-2</b>	Tie it up with a string (put out next time, if on a rainy day)
Wrapping paper	<b>R-2</b>	Put out with Other Paper
Packaging film	<b>BW</b>	
Bandage	<b>BW</b>	
Insect repellent case	<b>BW</b>	
Kitchen knife	<b>UBW</b>	Wrap it in paper, etc., and write "Knife" before disposal
Bowling ball	<b>LSW</b>	Directly brought in or through individual curbside collection ▶See page 9 Up to 10 items per day if brought in directly
Hose	<b>BW</b>	Tie it up to less than 90cm *Remove the reel and put out with unburnable waste.
Ball (soccer, baseball, etc.)	<b>BW</b>	
Ballpoint pen	<b>BW</b>	
Walker (for children)	<b>UBW</b>	
Button battery	<b>BT</b>	Place in the battery collection box
Hearing aid	<b>SHA</b>	Place in the collection box. Can be disposed of as unburnable waste.
Hot carpet	<b>BW</b> ★2	Tie it up to less than 90cm
Hot plate	<b>UBW</b>	
Bag for potato chips <small>With </small>	<b>R-1</b> ★1	
Plastic tank container	<b>UBW</b>	Make sure to remove kerosene, petroleum, etc., and remove the cap, etc.
Ice pack (refrigerant)	<b>BW</b>	
Books	<b>R-2</b>	Tie into a bundle with hardcovers, catalogs, weekly magazines, magazines, manga books, etc. ▶See page 7
Bookshelf	<b>LSW</b>	Directly brought in or through individual curbside collection ▶See page 9 If less than 90 cm, put out with unburnable waste.
(gas) cylinder	×	Through dealers and specialized contractors
<b>ま</b> Margarine, butter container (plastic)	<b>BW</b>	Because dirt cannot be removed
Mahjong tiles	<b>UBW</b>	
(Personal Computer) mouse	<b>SHA</b>	Place in the collection box Can be disposed of as unburnable waste
Magnet sheet	<b>BW</b>	

★5...Storage sheds that can be put out through individual curbside collection Up to 10 steel plates (90 cm or more and less than 2 m) for storage sheds can be dismantled. Storage sheds that cannot be dismantled must be 260cm or less in total height, width and depth.

Items	Sorting category	Notes on how to dispose, etc.
<b>ま</b> Pillow	<b>BW</b>	
Pillow cover	<b>R-2</b>	Tie it up with a string (put out next time, if on a rainy day)
Marker pen	<b>BW</b>	Put out items made of metal with unburnable waste
Massage chair	<b>LSW</b>	Directly brought in or through individual curbside collection ▶See page 9 Items less than 90 cm may be put out with unburnable garbage
Mattress (without springs)	<b>LSW</b>	Directly brought in or through individual curbside collection ▶See page 9
Mattress (with springs)	<b>LSW</b>	Directly brought in or through individual curbside collection ▶See page 9
Cutting board	<b>BW</b>	
Muffler (clothing)	<b>R-2</b>	Tie it up with a string (put out next time, if on a rainy day)
Thermos (pot)	<b>UBW</b>	
Mayonnaise container	<b>BW</b>	Because dirt cannot be removed
<b>み</b> Mixer	<b>UBW</b>	
Sewing machine	<b>UBW</b> ★2	
Miso container (plastic)	<b>BW</b>	Because dirt cannot be removed
Minicar (toy)	<b>UBW</b>	
<b>む</b> Insect cage (plastic)	<b>BW</b>	
Steamer	<b>UBW</b>	
Magnifying glass	<b>UBW</b>	
<b>め</b> Calling card	<b>R-2</b>	Put out with Other Paper
Eyeglass	<b>UBW</b>	
Eyeglass case	<b>BW</b>	
Eye-drop container	<b>BW</b>	
Memo paper	<b>R-2</b>	Put out with Other Paper
<b>も</b> Blanket	<b>R-2</b>	Tie it up with a string (put out next time, if on a rainy day) Items with feathers, wool and cotton are burnable waste
Motors	×	Through a licensed contractor (Taisei Co., LTD.) ▶See page 11
Storage shed	<b>LSW</b> ★5	Directly brought in or through individual curbside collection after dismantling ▶See page 9
Laundry pole	<b>LSW</b>	Directly brought in or through individual curbside collection ▶See page 9 If less than 90 cm, put out with unburnable waste.
Clothesline (with concrete stand)	<b>LSW</b>	Directly brought in or through individual curbside collection ▶See page 9
<b>や</b> Kettle	<b>UBW</b>	
Medicine (household medicine)	<b>BW</b>	*Discharge of liquids is prohibited *Empty contents of bottle and put out with unburnable waste
Medicines (not household medicines)	×	Through dealers and specialized contractors
Vegetable packaging film <small>With </small>	<b>R-1</b> ★1	
<b>ゆ</b> Hot water bottle (plastic)	<b>BW</b>	Put out items made of metal with unburnable waste
<b>よ</b> Yogurt container <small>With </small>	<b>R-1</b> ★1	
<b>5</b> Lighter	<b>H&amp;D</b>	After using up the contents, put it in a separate transparent bag ▶See page 7
Radio	<b>SHA</b>	Place in the collection box. Can be disposed of as unburnable waste.
Radio cassette player	<b>UBW</b> ★3	Remove the battery
Wraps	<b>BW</b>	For the box, remove the clasp and put it out with Other Papers
School bag	<b>BW</b>	
<b>り</b> Remote controller	<b>SHA</b>	Place in the collection box. Can be disposed of as unburnable waste.
<b>る</b> Room runner (treadmill)	<b>LSW</b>	Directly brought in or through individual curbside collection ▶See page 9 If less than 90 cm, put out with unburnable waste.
<b>れ</b> Refrigerator	×	Applicable items for home appliance recycling ▶See page 10
Freezer	×	Applicable items for home appliance recycling ▶See page 10
Air cooler	<b>UBW</b> ★2	For items that use freon gas (chlorofluorocarbon), ask a specialized contractor or bring them in directly with a certificate showing that the freon gas has been collected.
Fan cooler	<b>UBW</b> ★2	For items that use freon gas (chlorofluorocarbon), ask a specialized contractor or bring them in directly with a certificate showing that the freon gas has been collected.
Phonograph record	<b>BW</b>	Put out the jacket with Recyclable Resources Type-2
Shopping bags	<b>R-1</b> ★1	
Picnic sheet	<b>BW</b>	Tie it up to less than 90cm
Retort pack <small>With </small>	<b>R-1</b> ★1	
Brick	<b>LSW</b>	Directly brought in or through individual curbside collection ▶See page 9 Up to 10 items per day if brought in directly; 1 set of 4 pieces, up to 8 pieces for individual curbside collection
Range hood cover	<b>BW</b>	If material is mainly non-woven fabric and less than 90 cm
<b>ろ</b> Candle	<b>BW</b>	
rollerblades (skating)	<b>UBW</b>	
<b>わ</b> Word Processor	<b>UBW</b>	Specify as word processor
Shirt	<b>R-2</b>	Tie it up with a string (put out next time, if on a rainy day)
Rubber bands	<b>BW</b>	

Collection stations are set up and managed by local residents. Make sure to observe the collection days, and maintain cleanliness when using them.  
Items not listed in the quick reference chart can be searched through the city's website or by using the garbage sorting app.



iOS version



Android version



# Garbage Collection Day List by Districts

As of March 1, 2023

**BW** Burnable Waste **UBW** Unburnable Waste **R-1** Recyclable Resources Type-1 (bottles, cans, PET bottles, food packing wraps) **R-2** Recyclable Resources Type-2 (old paper and fabrics)

**H&D** Harmful and Dangerous Waste

**In-charge** Responsible Area Sanitation Office

Nishi Ward	い	Uetayahon	Tue & Fri	Thu	Mon	Western Area Sanitation Office
		Uetayahonmurashinden	Tue & Fri	Thu	Mon	
		Uchinohongo	Tue & Fri	Mon	Wed	
		Sashiogi	Tue & Fri	Mon	Thu	
		Sashiogiryotsuji	Tue & Fri	Mon	Wed	
		Sashiogiryobessho	Tue & Fri	Mon	Thu	
		Sajikawa	Tue & Fri	Thu	Mon	
		Sanjomachi	Tue & Fri	Thu	Mon	
		Shimane	Tue & Fri	Thu	Mon	
		Showa	Tue & Fri	Thu	Mon	
せ	た	Seiganji	Tue & Fri	Mon	Wed	Western Area Sanitation Office
		Takagi	Tue & Fri	Mon	Wed	
		Tsukamoto (Oaza), Tsukamotocho 1- through 3-chome	Tue & Fri	Thu	Mon	
		Tsuchiya	Tue & Fri	Thu	Mon	
		Nakakugi	Tue & Fri	Mon	Wed	
		Nakanobayashi	Tue & Fri	Thu	Mon	
		Nishiasuma	Tue & Fri	Thu	Mon	
		Nishiarai	Tue & Fri	Mon	Wed	
		Nishiomiya 1- through 3-chome (formerly the Sashiogi district)	Tue & Fri	Mon	Thu	
		Nishiomiya 1- through 3-chome (not including the former Sashiogi district)	Tue & Fri	Mon	Wed	
ひ	ふ	Nishiomiya 4-chome	Tue & Fri	Mon	Wed	Western Area Sanitation Office
		Hirakatoryoryoke	Tue & Fri	Mon	Wed	
		Futatsumiya	Tue & Fri	Thu	Mon	
		Plaza	Tue & Fri	Thu	Mon	
		Horai	Tue & Fri	Mon	Thu	
		Mizuhata	Tue & Fri	Thu	Mon	
		Minegishi	Tue & Fri	Mon	Wed	
		Mihashi 5-chome	Tue & Fri	Thu	Mon	
		Mihashi 6-chome	Tue & Fri	Mon	Wed	
		Miyamaecho	Tue & Fri	Mon	Wed	
ゆ	ぎ	Yugicho 1- and 2-chome	Tue & Fri	Thu	Mon	Western Area Sanitation Office

Kita Ward	う	Uetakecho 1- and 2-chome	Tue & Fri	Thu	Mon	Western Area Sanitation Office
		Onaricho 4-chome	Mon & Thu	Tue	Fri	
		Kushihikicho 2-chome	Mon & Thu	Fri	Tue	
		Konbacho	Mon & Thu	Tue	Fri	
		Torocho, Torocho 1- and 2-chome	Tue & Fri	Thu	Mon	
		Naracho	Mon & Thu	Fri	Wed	
		Nisshincho 1-chome	Tue & Fri	Wed	Thu	
		Nisshincho 2-chome	Mon & Thu	Fri	Tue	
		Nisshincho 3-chome	Mon & Thu	Fri	Wed	
		Higashionaricho 1- and 2-chome	Mon & Thu	Tue	Fri	
へ	ほ	Besshocho	Mon & Thu	Fri	Wed	Western Area Sanitation Office
		Hongocho	Mon & Thu	Tue	Fri	
		Bonsaicho	Tue & Fri	Thu	Mon	
		Minuma 1- through 3-chome	Tue & Fri	Thu	Mon	
		Miyaharacho 1-, 2-, and 4-chome	Mon & Thu	Tue	Fri	
		Miyaharacho 3-chome	Mon & Thu	Fri	Wed	
		Yoshinocho 1- and 2-chome	Mon & Thu	Tue	Fri	

Chuo Ward	う	Uemine 1- through 4-chome	Mon & Thu	Wed	Fri	Western Area Sanitation Office
		Ennami 1- through 7-chome	Mon & Thu	Fri	Tue	
		Oto 1- through 6-chome	Tue & Fri	Mon	Thu	
		Kamiochiai 1- through 9-chome	Mon & Thu	Fri	Tue	
		Sakuraoka 1- and 2-chome	Mon & Thu	Tue	Fri	
		Shimoochiai (Oaza), Shimoochiai 2- and 3-chome	Tue & Fri	Wed	Mon	
		Shimoochiai 4- through 7-chome	Tue & Fri	Thu	Wed	
		Shintoshin	Mon & Thu	Fri	Tue	
		Shinnakazato 1- through 5-chome	Tue & Fri	Mon	Thu	
		Suzuya 1- through 9-chome	Tue & Fri	Thu	Mon	
す	は	Hachioji 1- through 5-chome	Mon & Thu	Wed	Fri	Western Area Sanitation Office
		Honmachinishi 1- through 6-chome	Mon & Thu	Tue	Fri	
		Honmachihigashi 1- through 7-chome	Mon & Thu	Tue	Wed	

Omiya Ward	お	Onaricho 1-chome	Mon & Thu	Wed	Tue	Western Area Sanitation Office
		Onaricho 2- and 3-chome	Mon & Thu	Tue	Fri	
		Kamikocho	Mon & Thu	Wed	Tue	
		Kishikicho 2-chome (west of train tracks)	Mon & Thu	Wed	Tue	
		Kushihikicho 1-chome	Mon & Thu	Fri	Tue	
		Sakuragicho 1- through 3-chome	Mon & Thu	Wed	Tue	
		Sakuragicho 4-chome	Mon & Thu	Wed	Tue	
		Nishikicho	Mon & Thu	Wed	Tue	
		Mihashi 1-chome	Tue & Fri	Wed	Thu	
		Mihashi 2- through 4-chome	Tue & Fri	Thu	Mon	
あ	お	Azumacho 1- and 2-chome	Tue & Fri	Mon	Thu	Eastern Area Sanitation Office
		Amanumacho 1- and 2-chome	Tue & Fri	Mon	Thu	
		Ohara 6- and 7-chome	Mon & Thu	Tue	Fri	
		Kishikicho 1-chome	Tue & Fri	Mon	Thu	
		Kishikicho 2-chome (east of train tracks)	Tue & Fri	Mon	Thu	
		Kishikicho 3- and 4-chome	Tue & Fri	Mon	Thu	
		Kitabukurocho 1- and 2-chome	Tue & Fri	Mon	Thu	
		Shimocho 1- through 3-chome	Tue & Fri	Mon	Thu	
		Junocho 1- and 2-chome	Tue & Fri	Wed	Mon	
		Sengencho 1- and 2-chome	Tue & Fri	Mon	Thu	
せ	た	Daimoncho 1- through 3-chome	Tue & Fri	Mon	Thu	Eastern Area Sanitation Office
		Takahanacho 1- through 4-chome	Tue & Fri	Mon	Wed	
		Dotecho 1- through 3-chome	Tue & Fri	Wed	Mon	
		Nakacho 1- through 3-chome	Tue & Fri	Mon	Thu	
		Horinouchicho 1- through 3-chome	Tue & Fri	Wed	Mon	
		Miyacho 1- through 5-chome	Tue & Fri	Mon	Thu	

Minuma Ward	お	Oya	Mon & Thu	Fri	Wed	Eastern Area Sanitation Office
		Owadacho 1- and 2-chome	Mon & Thu	Wed	Tue	
		Kataya 1- and 2-chome	Tue & Fri	Thu	Wed	
		Katayashinden	Tue & Fri	Thu	Wed	
		Katayanagi (Oaza), Katayanagi 1- and 2-chome	Tue & Fri	Thu	Wed	
		Katayanagihigashi	Tue & Fri	Thu	Wed	
		Kamiyamaguchishinden	Tue & Fri	Thu	Wed	
		Kofukasaku	Mon & Thu	Fri	Tue	
		Sasamaru	Tue & Fri	Thu	Wed	
		Shimacho, Shimacho 1- and 2-chome	Mon & Thu	Fri	Tue	
こ	さ	Shinuemomshinden	Tue & Fri	Thu	Wed	Eastern Area Sanitation Office
		Someya (Oaza), Someya 1- through 3-chome	Tue & Fri	Thu	Wed	
		Nakagawa	Tue & Fri	Thu	Wed	
		Nizutsumi	Mon & Thu	Fri	Wed	
		Nishiyamashinden	Tue & Fri	Thu	Wed	
		Nishiyamamurashinden	Tue & Fri	Thu	Wed	
		Hasunuma	Mon & Thu	Wed	Tue	
		Haruoka 1- through 3-chome	Mon & Thu	Fri	Tue	
		Haruno 1- through 4-chome	Mon & Thu	Fri	Tue	
		Higashiarai	Tue & Fri	Thu	Wed	
ひ	ふ	Higashiomiya 1- through 7-chome	Mon & Thu	Tue	Fri	Eastern Area Sanitation Office
		Higashimiyashita (Oaza), Higashimiyashita 1- through 3-chome	Mon & Thu	Fri	Wed	
		Higashimonzen	Mon & Thu	Fri	Wed	
		Hizako	Mon & Thu	Fri	Wed	
		Fukasaku (Oaza), Fukasaku 1- through 5-chome	Mon & Thu	Fri	Tue	
		Futtono (Oaza), Futtono 1- and 2-chome	Mon & Thu	Fri	Wed	
		Horisakicho	Mon & Thu	Tue	Fri	
		Marugasaku (Oaza), Marugasakicho	Mon & Thu	Tue	Fri	
		Mikura	Tue & Fri	Thu	Wed	
		Minaminakano	Tue & Fri	Mon	Thu	
み	や	Minaminakamaru	Tue & Fri	Mon	Thu	Eastern Area Sanitation Office
		Miyagayato (Oaza), Miyagayato 1- through 4-chome	Mon & Thu	Fri	Tue	
		Miyama	Tue & Fri	Thu	Wed	
		Yama	Tue & Fri	Thu	Wed	

- ★1 Early morning collection district for “burnable waste” (only a part of Kitaurawa 1-chome and 3-chome is an early morning collection district.)
- ★2 For the former Sashiogi area, confirm through this site:  
[https://www.city.saitama.jp/001/006/010/003/p001912\\_d/fil/sinkyu.xlsx](https://www.city.saitama.jp/001/006/010/003/p001912_d/fil/sinkyu.xlsx)

Sakura Ward	お	Okubodanchi	Tue & Fri	Mon	Thu	Eastern Area Sanitation Office
		Okuboryoke	Mon & Thu	Fri	Tue	
		Kamiokubo	Tue & Fri	Mon	Thu	
		Goseki	Mon & Thu	Fri	Tue	
		Zaike	Wed & Sat	Mon	Thu	
		Sakawa, Sakawa 1- through 6-chome	Wed & Sat	Mon	Thu	
		Sakurada 1- through 3-chome	Mon & Thu	Fri	Tue	
		Shibiraki, Shibiraki 1- through 4-chome	Mon & Thu	Fri	Wed	
		Shimookubo	Tue & Fri	Mon	Thu	
		Shuku	Wed & Sat	Mon	Thu	
た	た	Shirakuwa	Wed & Sat	Mon	Thu	Eastern Area Sanitation Office
		Jinde	Mon & Thu	Fri	Tue	
		Tajima 1- through 3-chome and 5-chome	Tue & Fri	Thu	Wed	
		Tajima 4-chome	Tue & Fri	Mon	Wed	
		Tajima 6-chome (Danchi)	Mon & Thu	Tue	Wed	
		Tajima 7- through 10-chome	Mon & Thu	Fri	Wed	
		Tsukamoto	Mon & Thu	Fri	Tue	
		Dojo (Oaza), Dojo 1- and 3- through 5-chome	Mon & Thu	Fri	Tue	
		Dojo 2-chome	Wed & Sat	Fri	Tue	
		Nakajima, Nakajima 1- through 4-chome	Wed & Sat	Mon	Thu	
な	に	Nishibori, Nishibori 1- through 10-chome	Mon & Thu	Fri	Tue	Eastern Area Sanitation Office
		Nishibori (Lamiyu Urawa High-rise)	Tue & Fri	Mon	Wed	
		Machiya (Oaza), Machiya 1- through 4-chome	Mon & Thu	Fri	Tue	
		Minamiurawa 1- through 4-chome	Mon & Thu	Fri	Tue	
		Minamimotokubo 1- and 2-chome	Mon & Thu	Fri	Tue	
		Yamakubo, Yamakubo 1- and 2-chome	Wed & Sat	Mon	Thu	

Urawa Ward	お	Ohara 1- through 5-chome	Mon & Thu	Tue	Fri	Eastern Area Sanitation Office
		Kamikizaki 1- through 8-chome	Mon & Thu	Tue	Fri	
		Kizaki 1- through 5-chome	Mon & Thu	Tue	Fri	
		Kishicho 1- through 5-chome	Wed & Sat	Fri	Mon	
		Kishicho 6- and 7-chome	Wed & Sat	Tue	Mon	
		Kitaurawa 1- and 3-chome	Tue & Fri	Thu	Wed	
		Kitaurawa 2-chome	Tue & Fri	Thu	Wed	
		Kitaurawa 4-chome	Mon & Thu	Tue	Wed	
		Kitaurawa 5-chome	Mon & Thu	Tue	Fri	
		Kozancho	Mon & Thu	Tue	Fri	
し	せ	Komaba 1- and 2-chome	Mon & Thu	Wed	Fri	Eastern Area Sanitation Office
		Shinmei 1- and 2-chome	Tue & Fri	Thu	Mon	
		Segasaki 1- through 5-chome	Mon & Thu	Wed	Fri	
		Daito 1- through 3-chome	Mon & Thu	Tue	Fri	
		Takasago 1-chome	Tue & Fri	Thu	Mon	
		Takasago 2-chome	Wed & Sat	Tue	Mon	
		Takasago 3-chome	Mon & Thu	Tue	Fri	
		Takasago 4-chome	Wed & Sat	Tue	Mon	
		Tokiwa 1- and 2-chome	Wed & Sat	Tue	Mon	
		Tokiwa 3-, 4-, and 6- through 8-chome	Wed & Sat	Tue	Mon	
と	な	Tokiwa 5-, 9-, and 10-chome	Mon & Thu	Tue	Wed	Eastern Area Sanitation Office
		Nakacho 1-chome	Tue & Fri	Thu	Mon	
		Nakacho 2-chome	Mon & Thu	Tue	Fri	
		Nakacho 3- and 4-chome	Wed & Sat	Tue	Mon	
		Harigaya 1- through 3-chome	Tue & Fri	Thu	Wed	
		Harigaya 4-chome	Mon & Thu	Tue	Fri	
		Higashikishicho	Wed & Sat	Thu	Tue	



## Bringing in household waste

### Where to apply

Waste Reception Call Center TEL 050-3033-8229

### Contact information

Environmental Facility Management Division (for inquiries concerning the reservation system) TEL 048-829-1343

**Reservation is required on Saturdays, holidays, and from December 29 to December 30, 2023.**

Garbage can only be brought in during the morning on Saturdays, and cannot be brought in on Sundays.

### Concerning the reservation system for bringing in garbage

Due to an increase in the number of items brought directly to waste disposal facilities, the surrounding roads are becoming congested, which is hindering the lives of residents, hence prior reservation is required when bringing directly to each waste disposal facility on Saturdays, holidays, and the end of the year. (No reservation is required on weekdays)

### 1 Apply for a reservation by calling the Waste Reception Call Center

#### Where to apply

Waste Reception Call Center (for reservations only) TEL 050-3033-8229

1 Garbage type 2 Telephone Number 3 Name, address 4 Desired date for bringing in waste

5 Please give the name of the garbage disposal facility where you plan to bring your garbage.

\* There is a limit to the number of reservations that can be made per day. **Same-day reservation is not possible**, but reservations can be made up to one month in advance.

\* One reservation per household is required, and the next reservation cannot be made until the next business day after the delivery date.

\* For one reservation, one car is allowed for one delivery.

\* Those with hearing or speech disabilities can bring in the garbage without a reservation after presenting a certificate at the time of delivery.

Monday to Friday

8:30~17:00

(Closed on Saturdays, Sundays and from December 30 to January 3)

\*Accepts items even on national holidays.

### 2 Keep the reservation number

When applying for a reservation, the reservation number will be given which will be needed during reception on the day of delivery, so it is advised to take notes.

### 3 Bring in the garbage on the reserved date

Confirm the reservation number during reception at the waste disposal facility.

### Contact information list

April 1, 2023

Concerning the individual curbside collection of large-sized waste	Large-sized Waste Reception Center (for reservations only)		TEL 048-878-0053	
Concerning the reservation for bringing in garbage	Waste Reception Call Center (for reservations only)		TEL 050-3033-8229	
Concerning the sorting of waste Concerning collected / uncollected waste Concerning waste reduction, and recycling awareness	Waste Management Division	6-4-4 Tokiwa, Urawa-Ward	TEL 048-829-1336	FAX 829-1991
Concerning the sorting of waste Concerning waste collection / collection stations Concerning fureai (rapport) collection [Area Sanitation Office] (See pages 18 and 19 for the office-in charge of each district.)	Western Area Sanitation Office	52-1 Horai, Nishi Ward	TEL 048-623-3899	FAX 622-9144
	Eastern Area Sanitation Office	317 Osaki, Midori Ward	TEL 048-878-0956	FAX 878-0960
Concerning the direct delivery of household waste to a disposal facility [garbage disposal facility]	Western Area Environmental	52-1 Horai, Nishi Ward	TEL 048-623-4100	FAX 622-5353
* Refer to page 9 regarding the time to bring in waste. * Only burnable waste can be brought directly to the Eastern Area Environmental.	Eastern Area Environmental	626-1 Hizako Minuma Ward	TEL 048-684-3802	FAX 686-0466
* Only unburnable waste and large-sized waste can be brought directly to the Clean Center Osaki during weekdays.	Clean Center Osaki	317 Osaki, Midori Ward	TEL 048-878-0989	FAX 878-0959
	Sakura Area Environmental	4-2-1 Shibiraki, Sakura Ward	TEL 048-710-6010	FAX 838-5310
Concerning the sorting of waste [Daily Life Support Office]	Daily Life Support Office, Nishi Ward Office	3-4-2 Nishi-Omiya, Nishi Ward	TEL 048-620-2627	FAX 620-2762
	Daily Life Support Office, Kita Ward Office	1-852-1 Miyahara-cho, Kita Ward	TEL 048-669-6027	FAX 669-6162
	Daily Life Support Office, Omiya Ward Office	1-124-1 Kishiki-cho, Omiya Ward	TEL 048-646-3027	FAX 646-3162
	Daily Life Support Office, Minuma Ward Office	12-36 Horisaki-cho, Minuma Ward	TEL 048-681-6027	FAX 681-6162
	Daily Life Support Office, Chuo Ward Office	5-7-10 Shimo-ochiai, Chuo Ward	TEL 048-840-6027	FAX 840-6162
	Daily Life Support Office, Sakura Ward Office	4-3-1 Dojo, Sakura Ward	TEL 048-856-6137	FAX 856-6273
	Daily Life Support Office, Urawa Ward Office	6-4-4 Tokiwa, Urawa Ward	TEL 048-829-6052	FAX 829-6231
	Daily Life Support Office, Minami Ward Office	7-20-1 Bessho, Minami Ward Office	TEL 048-844-7137	FAX 844-7270
	Daily Life Support Office, Midori Ward Office	975-1 Nakao, Midori Ward	TEL 048-712-1137	FAX 712-1272
	Daily Life Support Office, Iwatsuki Ward Office	3-2-5 Honcho, Iwatsuki Ward	TEL 048-790-0128	FAX 790-0262
Concerning waste reduction, and recycling awareness	Waste Reduction and Recycling Policy Division	6-4-4 Tokiwa, Urawa Ward	TEL 048-829-1338	FAX 829-1991

Published by

Waste Management Division

TEL

048-829-1336

FAX

829-1991

Foreign language manuals and garbage sorting apps (English, Chinese, Korean, Vietnamese, Portuguese) are also available.